

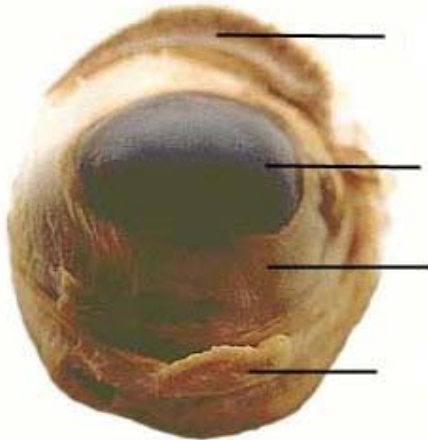
Chapter 9- Pre-Lab Sheep Eye Dissection

Use the following website to fill in the diagrams of the sheep eye. You will use these diagrams as a guide for identification during your dissection.

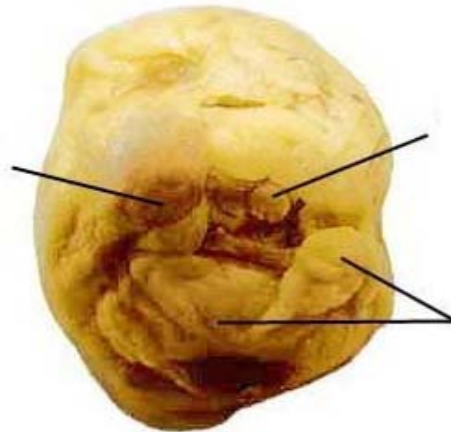
<http://jbworld.jbs.st-louis.mo.us/science/resources/skeleton/eye/eyedissection.html>

Pre-Lab Questions

Anterior View



Posterior View



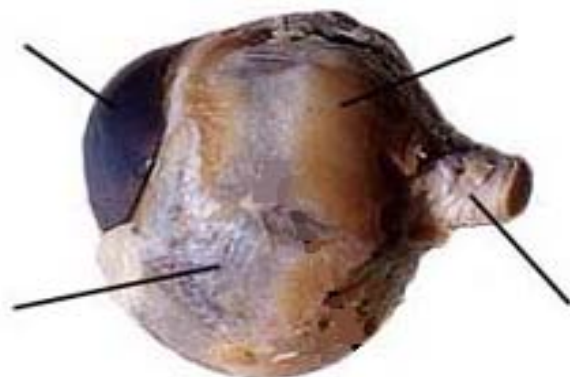
Anterior View
with eye lid, fat, and muscles removed



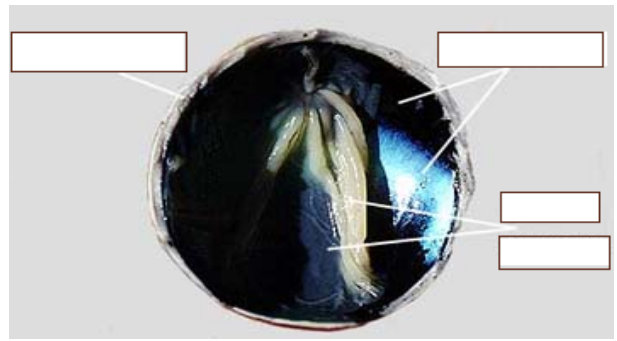
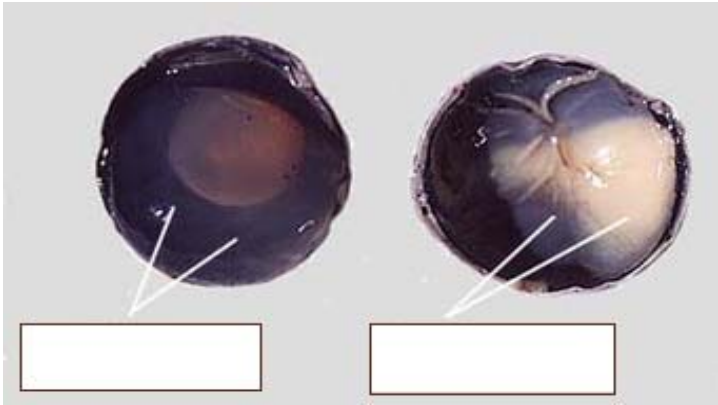
Posterior View
with eye lid, fat, and muscles removed



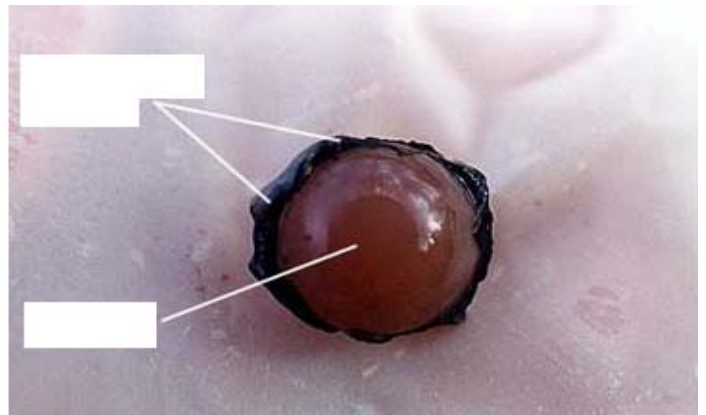
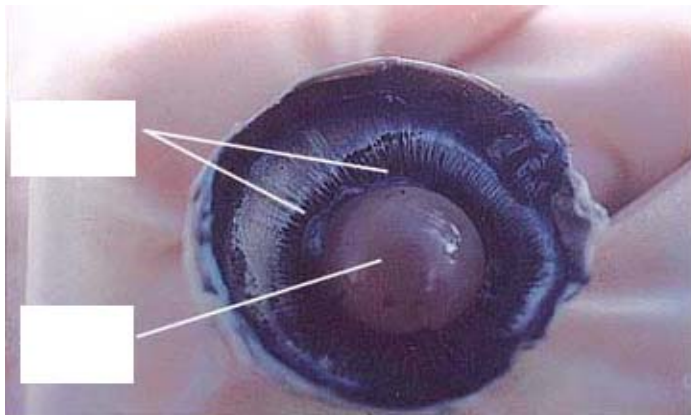
Lateral View



Internal Posterior View



Internal Anterior View



Anterior View Dissected

