

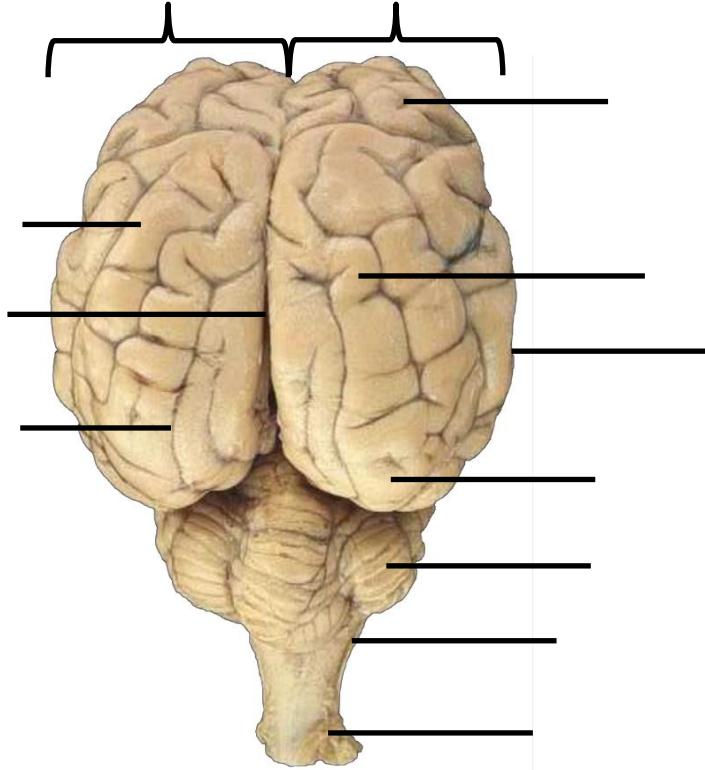
Chapter 8
Pre-Lab- Sheep Brain Dissection

Using any website of your choice, identify and label the structures of the sheep's brain.

Superior (Dorsal) View

Identify and label the following sheep brain structures on both diagrams:

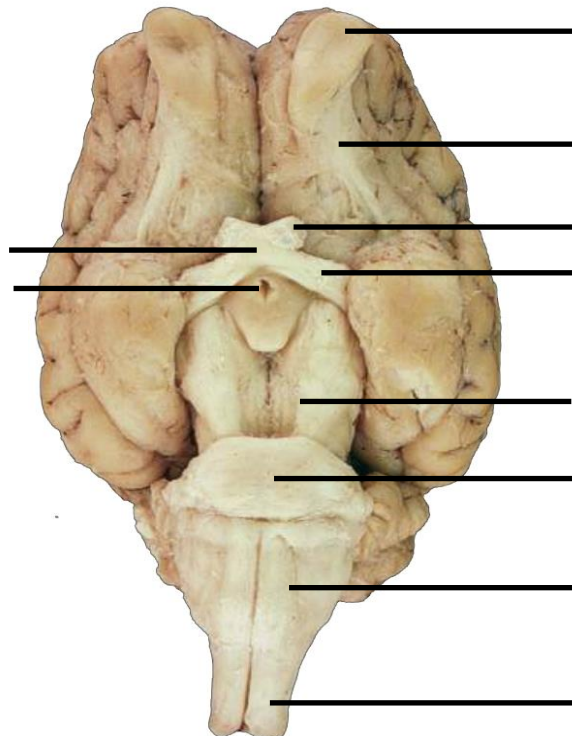
- Brain stem
- Cerebellum
- Cerebral Hemispheres
- Frontal Lobe
- Gyrus (Gyri)
- Longitudinal Fissure
- Occipital Lobe
- Parietal Lobe
- Spinal cord
- Sulcus (Sulci)
- Temporal Lobe



Inferior (Ventral) View

Identify and label the following sheep brain structures on both diagrams:

- Medulla oblongata
- Midbrain
- Olfactory bulbs
- Olfactory tract
- Optic tract
- Optic chiasm
- Optic nerves
- Pituitary gland
- Pons
- Spinal cord



Mid-Sagittal View

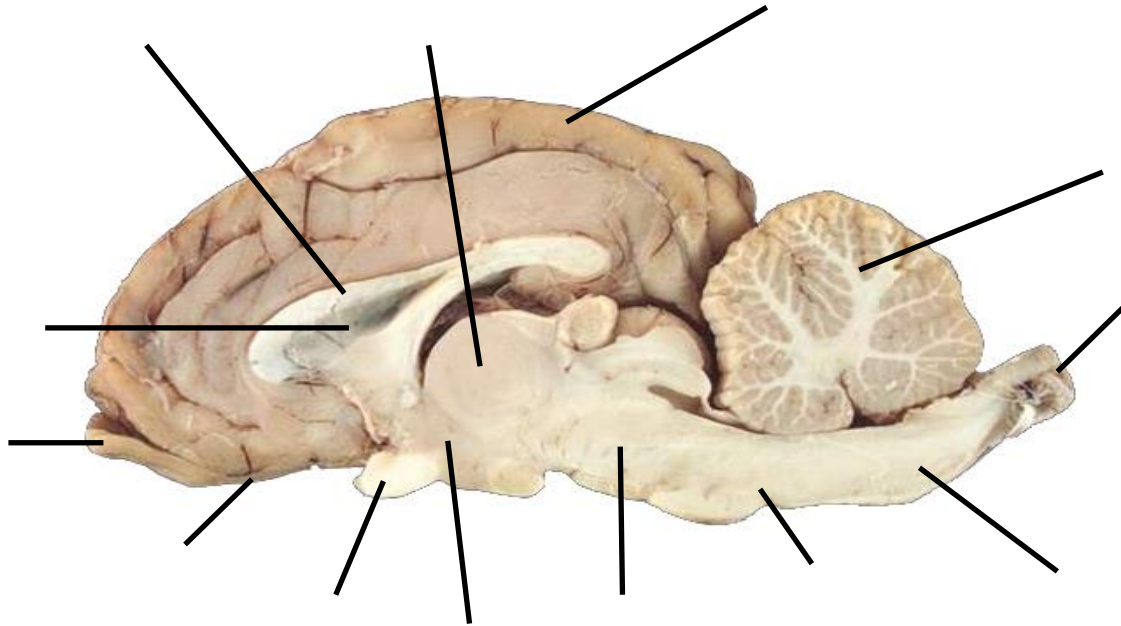
Identify and label the following sheep brain structures on both diagrams:

Cerebellum
Cerebral cortex
Corpus callosum
Hypothalamus

Lateral ventricle
Medulla oblongata
Midbrain
Olfactory bulb

Olfactory tract
Optic chiasm
Pons

Spinal cord
Thalamus



Lateral View

Identify and label the following sheep brain structures on both diagrams:

Brain Stem
Cerebellum
Frontal Lobe

Gyrus (Gyri)
Occipital Lobe
Olfactory bulb

Olfactory tract
Optic nerve
Parietal Lobe

Sulcus (Sulci)
Temporal Lobe

