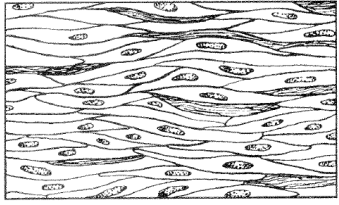
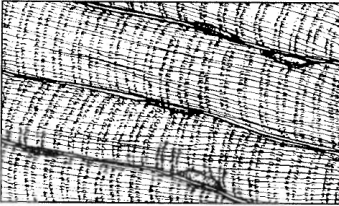
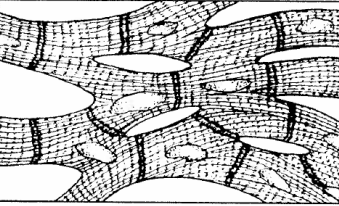


**Muscle and Nervous Tissue, Membranes and Tissue Repair
Honors Anatomy**

Fill in the table below by identifying the name of the muscle tissue, one location in the body, and its functions.

		Name of CT	Location in Body (1)	Functions
Muscle Tissue				
				
				

1. Below, list each muscle under the correct heading based on voluntary or involuntary muscle control.

Voluntary

Involuntary

2. Explain the meanings of voluntary and involuntary control of muscle contractions.

3. Below, list each muscle under the correct heading based on the number of nuclei it contains.

Multinucleated

Single Nuclei

4. Below, place the correct muscle type underneath its description of its cell shape.

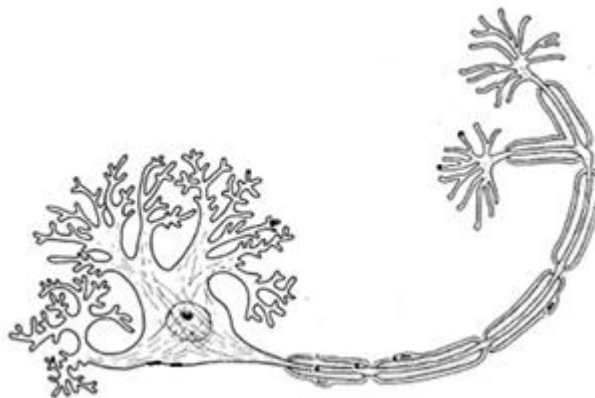
Branched

Cylindrical

Spindle

Using different colors and the list below, color and label the different parts of a neuron..

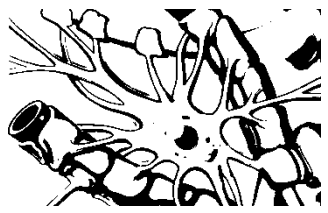

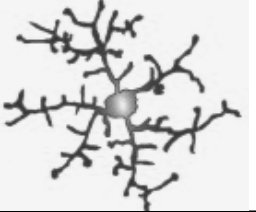
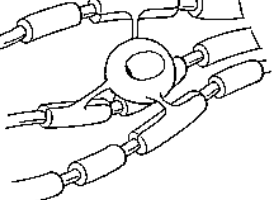
- Dendrite
- Axon
- Axon terminal
- Nucleus
- Myelin sheath
- Node of Ranvier
- Cell body



Fill in the correct name of the part of a neuron based on the given description of its function.

Part of the Neuron	Description of Function
	Contains the nucleus and most of the cytoplasm of the neuron
	Conducts and transmits nerve impulses
	Receives signals from sensory receptors or the axons of other neurons

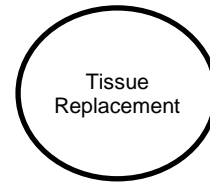
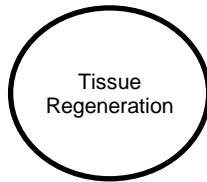
1. Nervous tissue cells whose function is to receive, create, and conduct action potentials are called _____.
2. Nervous tissue cells whose function is to support and nourish neurons are called _____.
3. a. **Fill in the correct name of the neuroglial cell based on the given description.**
(You may need to refer to Chapter 8)

Neuroglial Cell		Description
		Provide nutrients to neurons and produce a hormone called glia-derived growth factor.
		Forms the myelin sheath around axons outside the brain and spinal cord.
		Support neurons, engulf bacteria and cellular debris.
		Forms the myelin sheath around axons inside the brain and spinal cord.

Fill in the correct name of the membrane based on the given description of its function.

Membrane	Description of Function
	Lines freely movable joint cavities. Secretes a fluid that lubricates the ends of bones. Made of connective tissue.
	Lines the interior walls of organs and tubes that open to the outside of the body. Consists of an epithelium that contains goblet cells, which produce mucus.
	The skin. Forms the outer covering of the body. Made of stratified squamous keratinized epithelial tissue and dense irregular connective tissue.
	Lines cavities and outer wall of organs. Consists of a visceral and parietal membrane made of simple squamous epithelial tissue.

Create a double bubble comparing and contrasting tissue regeneration and tissue replacement.



1. _____ is the substitution of viable cells for dead cells.
2. List 2 pros for tissue regeneration.

a. List 2 groups of people who could benefit from tissue regeneration.

3. List 1 con for tissue regeneration.

4. List 1 way that 3D printing could be used in medicine.