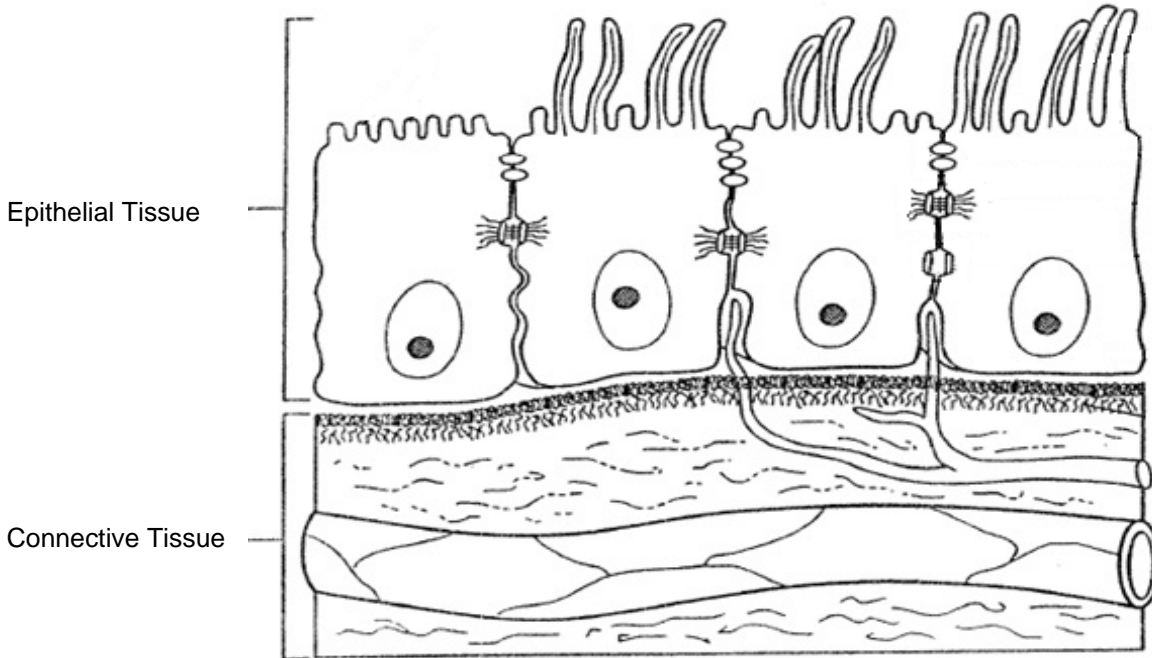


Epithelial Tissue Honors Anatomy

Using different colors and the list below, color and label the different parts of an epithelial cell.





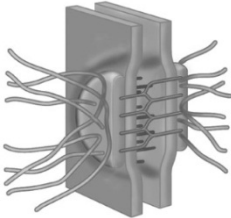
- | | | | |
|---|------------------------------------|---------------------------------------|--------------------------------------|
| <input type="radio"/> Apical surface | <input type="radio"/> Cilia | <input type="radio"/> Lateral surface | <input type="radio"/> Tight junction |
| <input type="radio"/> Basal surface | <input type="radio"/> Desmosome | <input type="radio"/> Microvilli | |
| <input type="radio"/> Basement membrane | <input type="radio"/> Gap junction | <input type="radio"/> Nucleus | |

1. List 5 functions of epithelial tissue.

2. The process of cell division by which epithelial cells divide is called _____.
3. Epithelial tissue is avascular, which means that it lacks a direct _____ supply.
4. Epithelial tissue is classified by _____ and _____.
5. List the 3 surfaces of an epithelial cell.

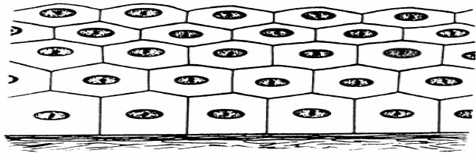
- a. The apical surface of epithelial cells is also known as the _____ because it is not attached to any other tissue.
 1. Tiny cellular extensions that increase the surface area of the apical surface of an epithelial cell are called _____.
 2. Finger-like projections on the apical surface of an epithelial cell that helps move substances along the free surface are called _____.

Fill in the table below by identifying the name of the cellular junction, one location in the body, and its functions.

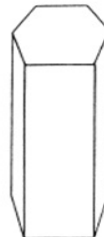
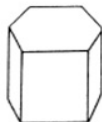
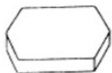
	Cellular Junction	Location in Body (1)	Functions
			
			
			

1. A _____ is a cell junction that anchors cells to basement membranes.
2. _____ are a specialized tissue that consists of one or more cells that produce and secrete product.
3. Distinguish the main difference between an exocrine gland and an endocrine gland.

On the diagrams below, label the epithelial tissues by the number of layers.



On the diagrams below, label the epithelial cells by shape.



Fill in the table below by identifying the name of the epithelial tissue, one location in the body, and its functions.

	Name of ET	Location in Body (1)	Functions
