

**Chapter 12- Computer Lab
Sheep Heart Structure Identification**

Using the following website <http://www.gwc.maricopa.edu/class/bio202/heart/anthrt.htm> identify the structures of the sheep heart.

- 1 Looking at the anterior view of the sheep heart, identify the following structures on the diagram provided.

Right Atrium

Left Atrium

Pulmonary Trunk

Right Ventricle

Left Ventricle

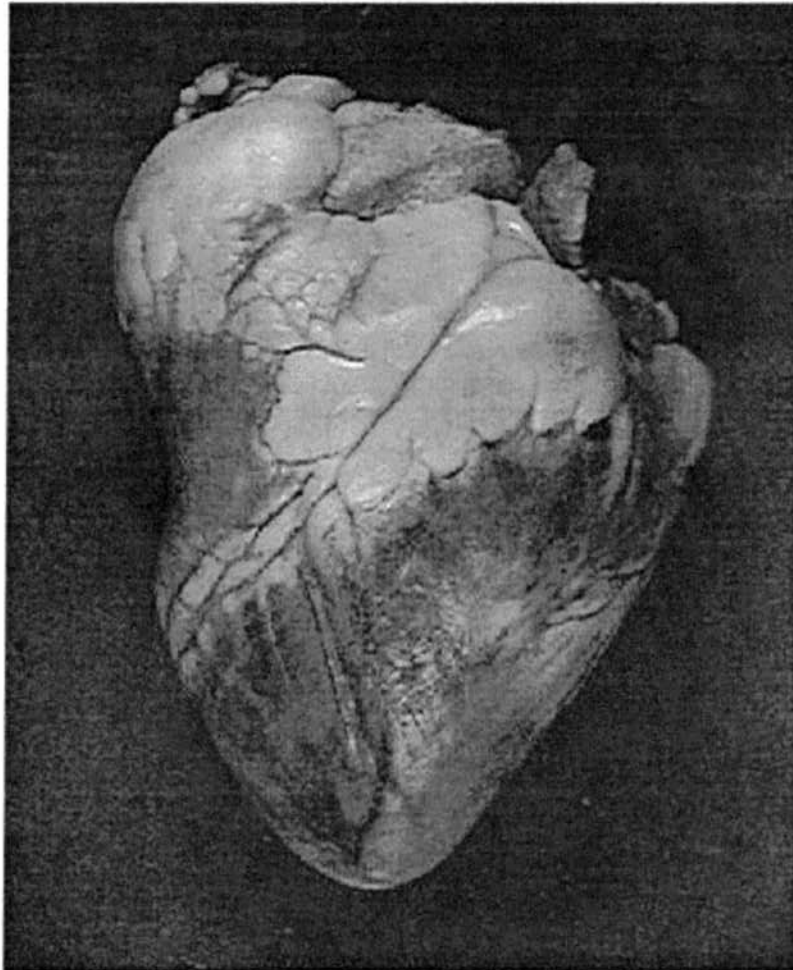
Interventricular Septum

Apex

Base

Anterior Longitudinal Fissure (Anterior interventricular artery)

- 2 When you are finished labeling the diagram, trace the incisions on your diagram that you will be making on the sheep heart. You will be making incisions on the left and right sides of the heart. This will serve as a guide for your actual dissection.

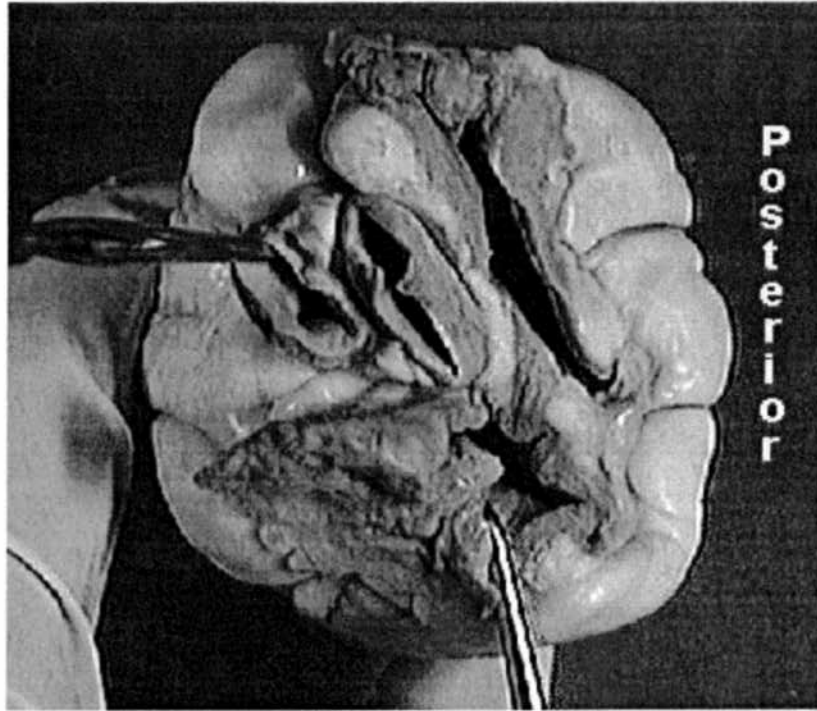


- 3 Looking at the superior view of the sheep heart, identify the following structures on the diagram provided. Also, be sure to label anterior, posterior, right, and left sides of the heart

Right Atrium
Left Atrium

Pulmonary Trunk
Aorta

Pulmonary Vein
Superior Vena Cava



- 4 Looking at the interior anterior view of the sheep heart, identify the following structures on the diagram provided.

Right Atrium
Right Ventricle
Left Atrium
Tricuspid Valve
Bicuspid Valve
Aortic Semilunar Valve
Myocardium
Aorta
Chordae Tendinae
Papillary Muscles (not labeled on website)
Interventricular Septum

