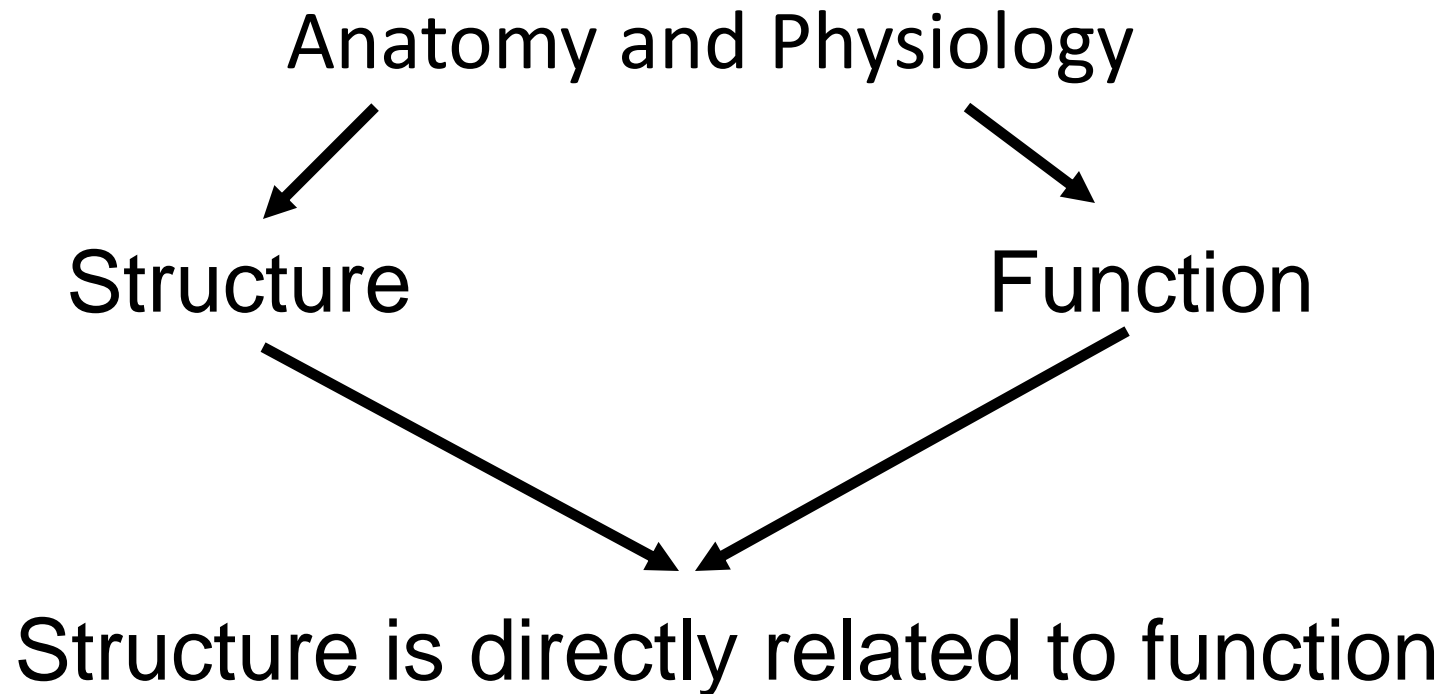


# Chapter 1-

# Organization of the Body

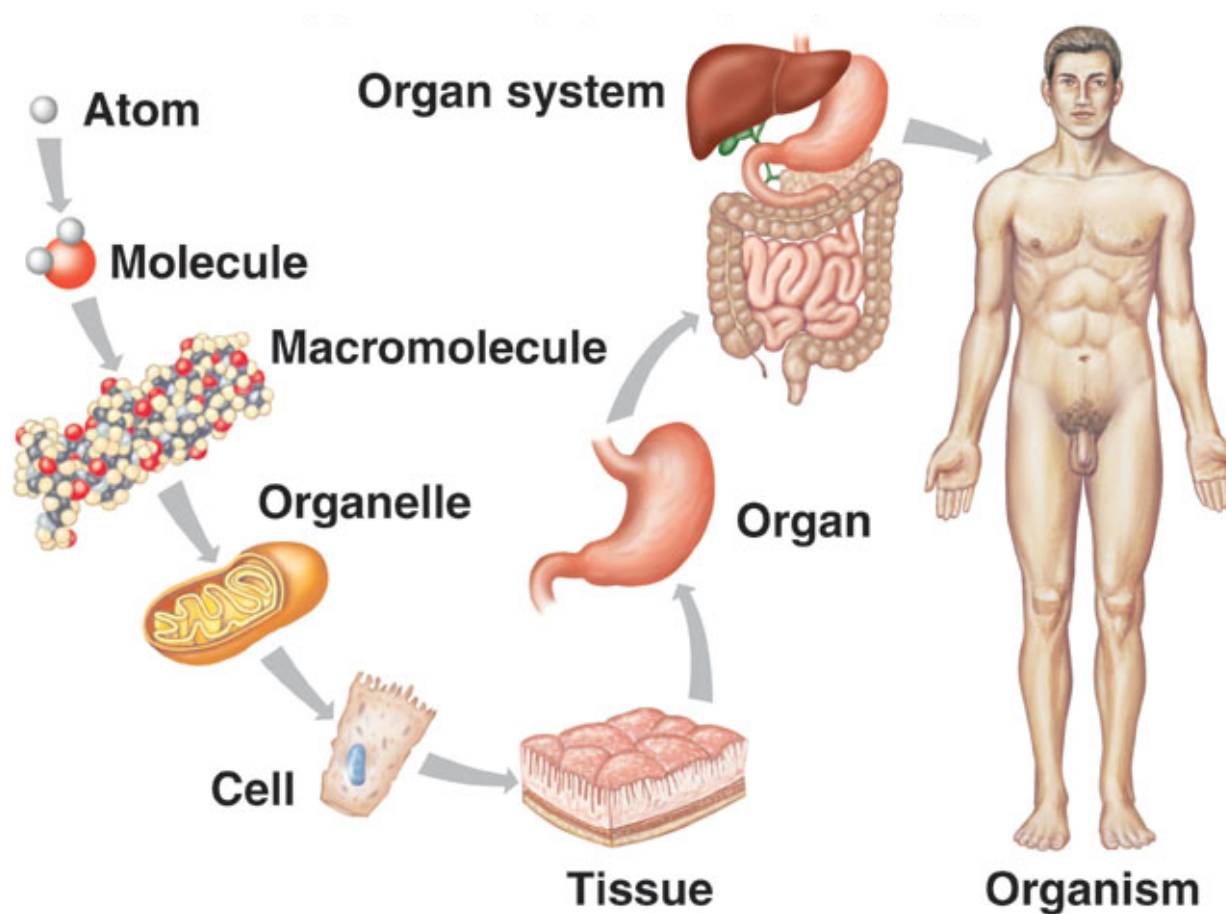
# 1.1- The Human Body



# 1.1- The Human Body

## Organization of Body Parts

- Levels of Organization
  - Hierarchy



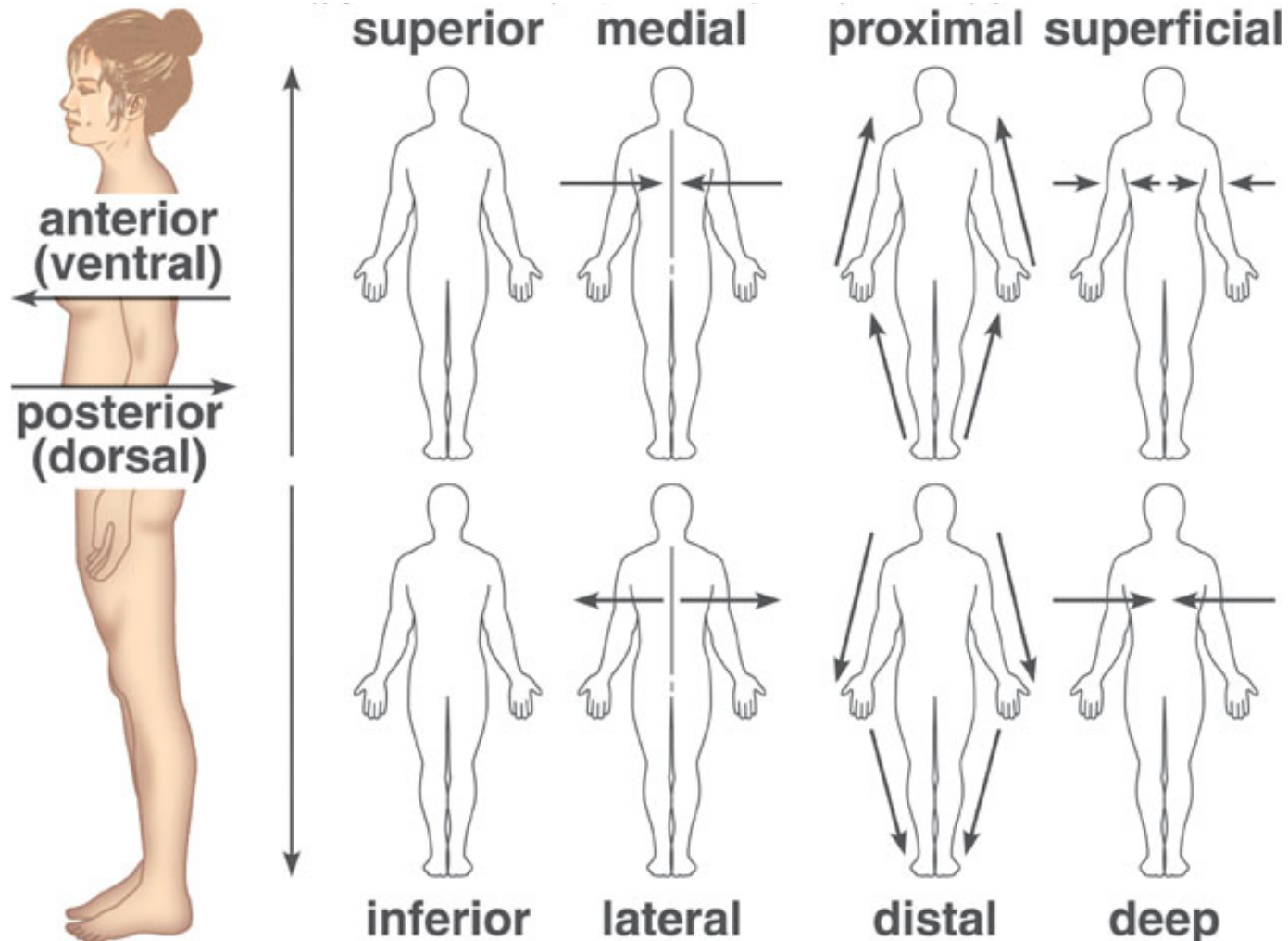
# 1.2- Anatomical Terms

- Terms used to describe location of body parts, regions of the body, and imaginary planes that section the body
- Anatomical position



# 1.2- Anatomical Terms

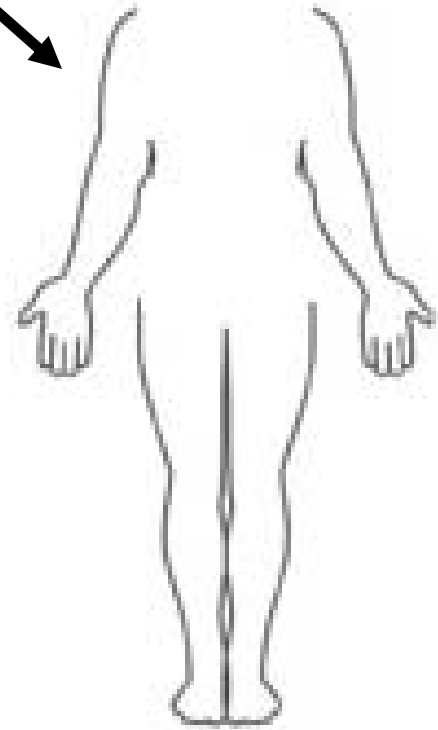
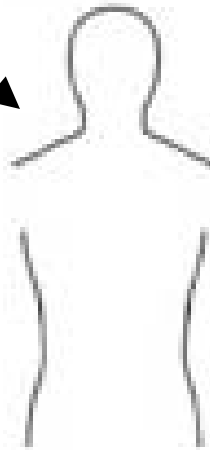
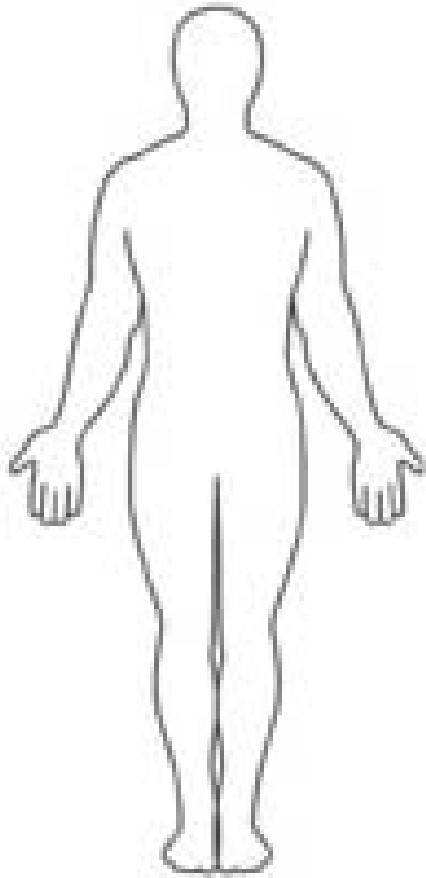
## Directional Terms



# 1.2- Anatomical Terms

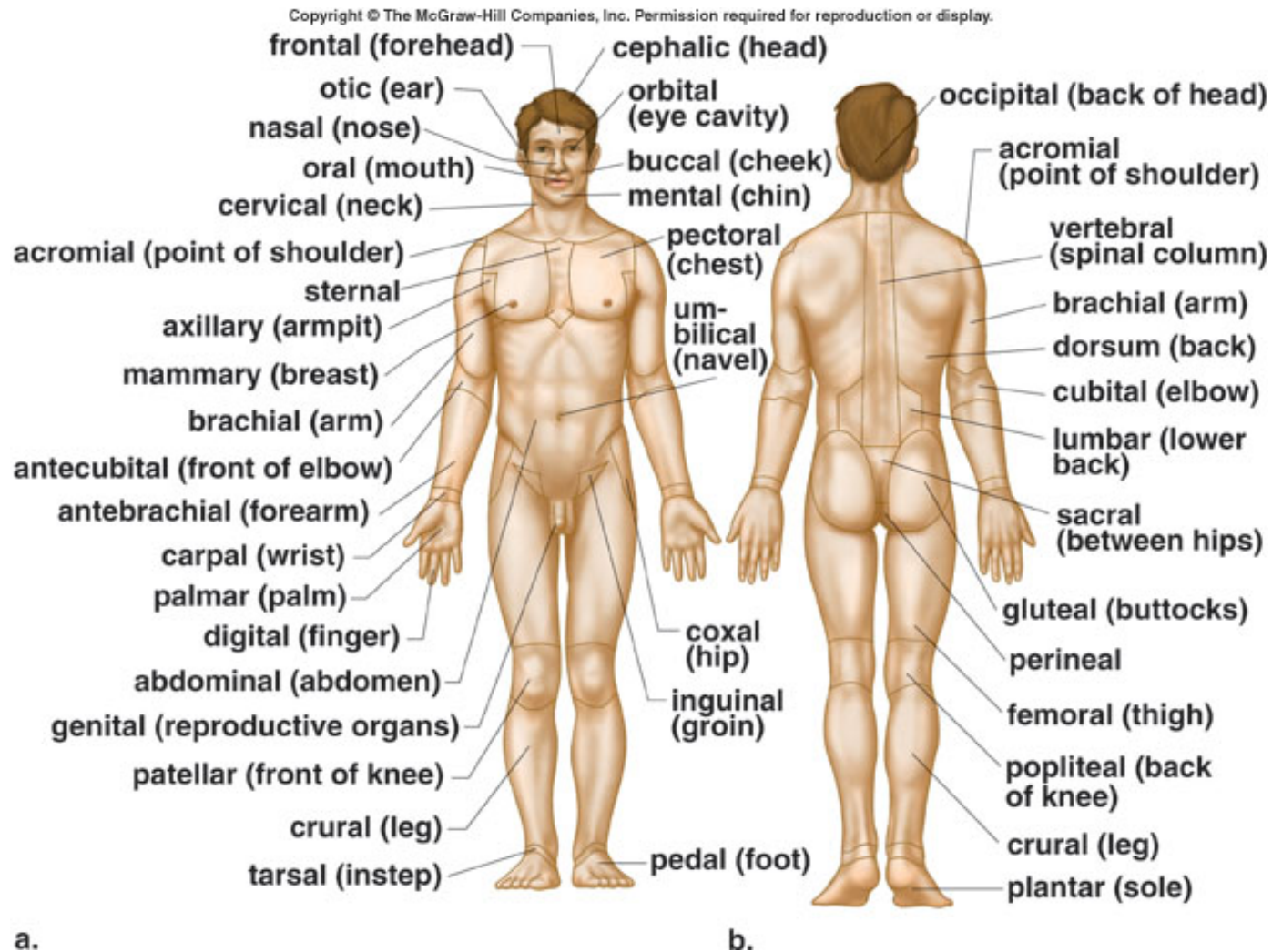
Regions of the Body

Axial vs. Appendicular



# 1.2- Anatomical Terms

## Terms for Body Parts



# Anatomical Directions and Orientation

As a class with your groups, you will locate and identify the following:

1. Stand up
2. Start in anatomical position
3. Extend arms forward palm side up
4. Pronate (turn palms down) right forearm (antebrachial)
5. Pronate left forearm (antebrachial)
6. Supinate (turn palms up) right antebrachial
7. Supinate left antebrachial
8. With the right hand, locate the left distal end of the brachial
9. With the left hand, locate the right distal end of the brachial



10. With the right hand, locate the right lateral surface of your cranium.
11. With the left hand, locate the left lateral surface of your cranium.
12. With your right hand, locate the superficial surface of the left acromial.
13. With your left hand, locate the superficial surface of the right acromial.
14. With your right hand, locate the lateral surface of your right coxal
15. With your left hand, locate the lateral surface of your left coxal

# Try it again, but quicker!!

As a class with your groups, you will locate and identify the following:

1. Stand up
2. Start in anatomical position
3. Extend arms forward palm side facing up
4. Pronate (turn palms down) right forearm (antebrachial)
5. Pronate left forearm (antebrachial)
6. Supinate (turn palms up) right antebrachial
7. Supinate left antebrachial
8. With the right hand, locate the left distal end of the brachial
9. With the left hand, locate the right distal end of the brachial

10. With the right hand, locate the right lateral surface of your cranium.
11. With the left hand, locate the left lateral surface of your cranium.
12. With your right hand, locate the superficial surface of the left acromial.
13. With your left hand, locate the superficial surface of the right acromial.
14. With your right hand, locate the lateral surface of your right coxal
15. With your left hand, locate the lateral surface of your left coxal

# 1.2- Anatomical Terms

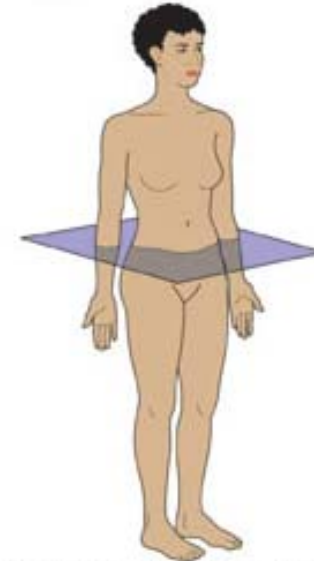
- Planes and Sections of the Body



**a. Sagittal plane**



**b. Frontal plane**



**c. Transverse plane**



**d. Sagittal section of pelvic cavity**



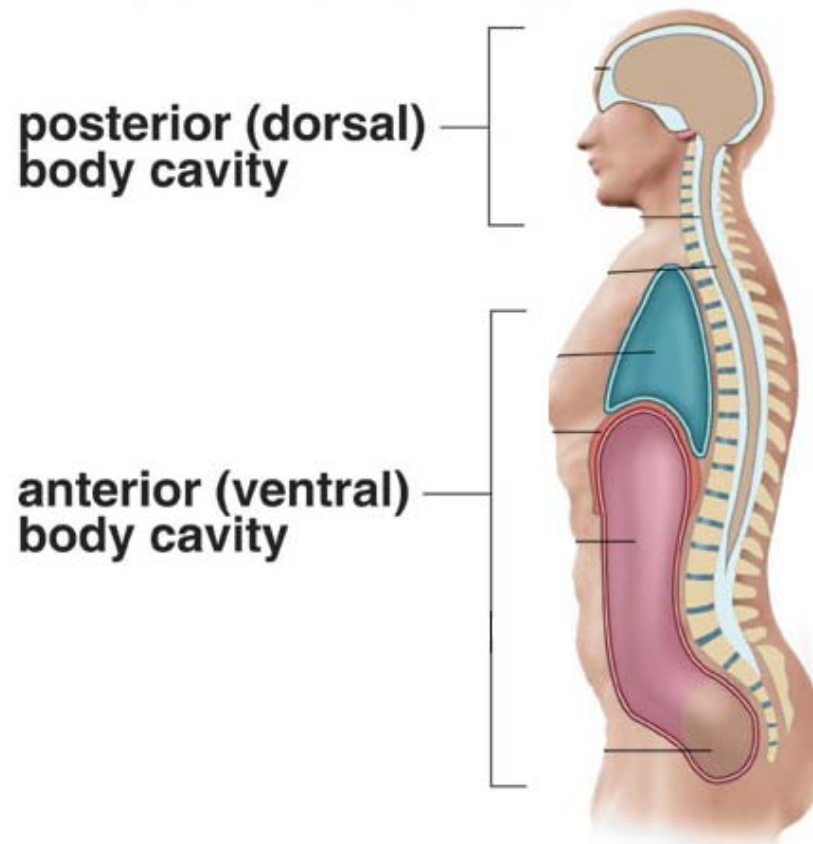
**e. Frontal section of thoracic cavity**



**f. Transverse section of head at eye level**

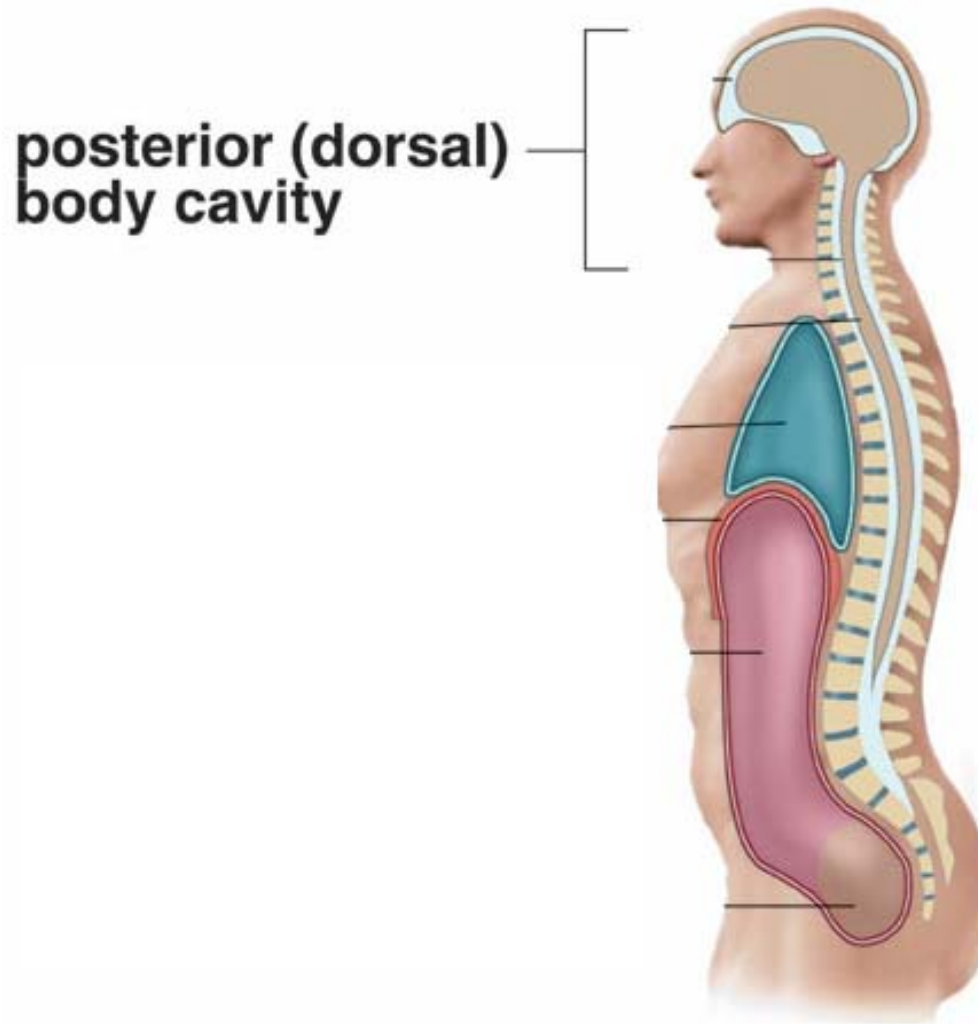
# 1.3- Body Cavities and Membranes

- A cavity is a space within the body
- Body is divided into two main cavities
  - Main cavities are subdivided into smaller cavities



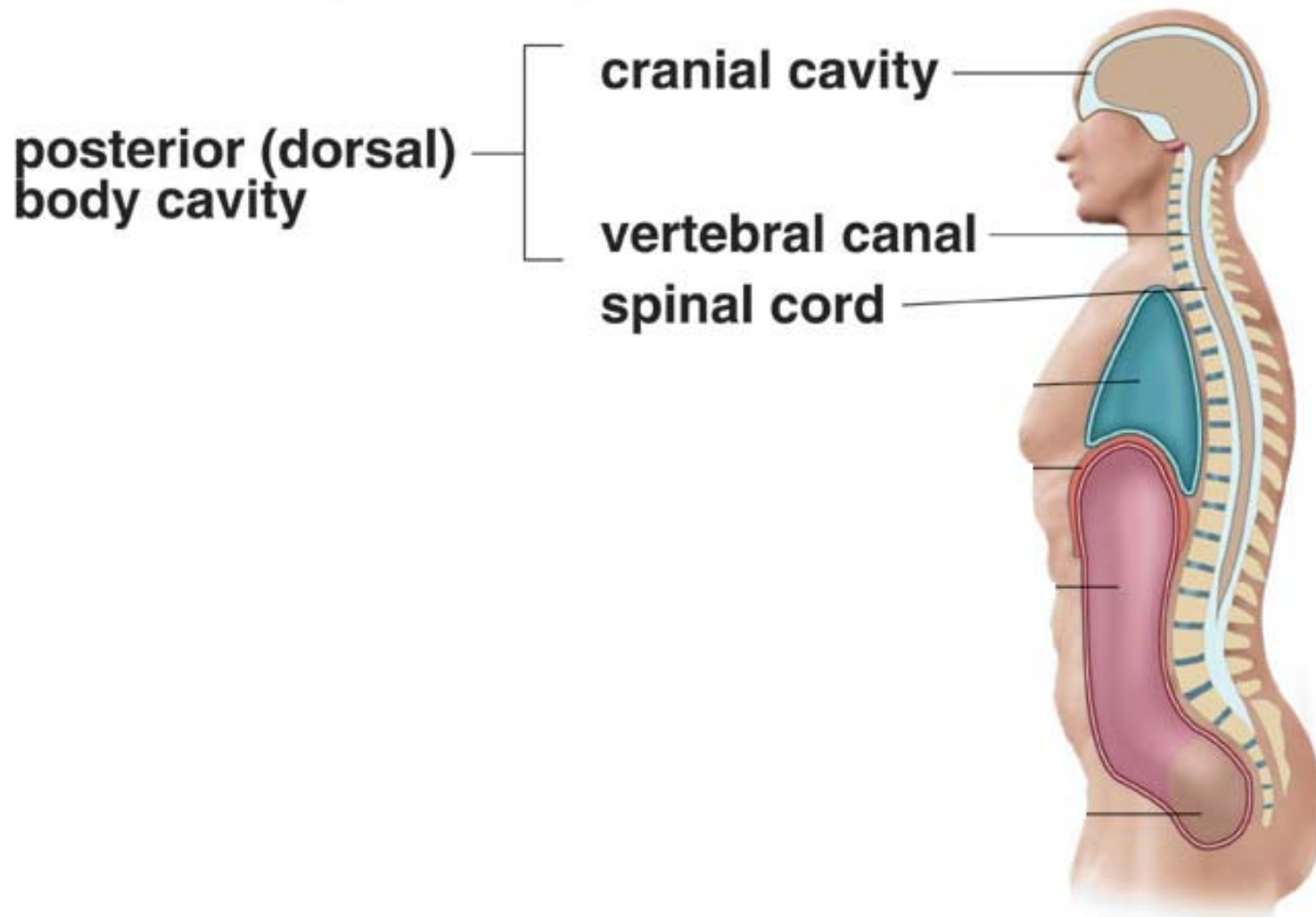
# 1.3- Body Cavities and Membranes

## Posterior (Dorsal) Cavity



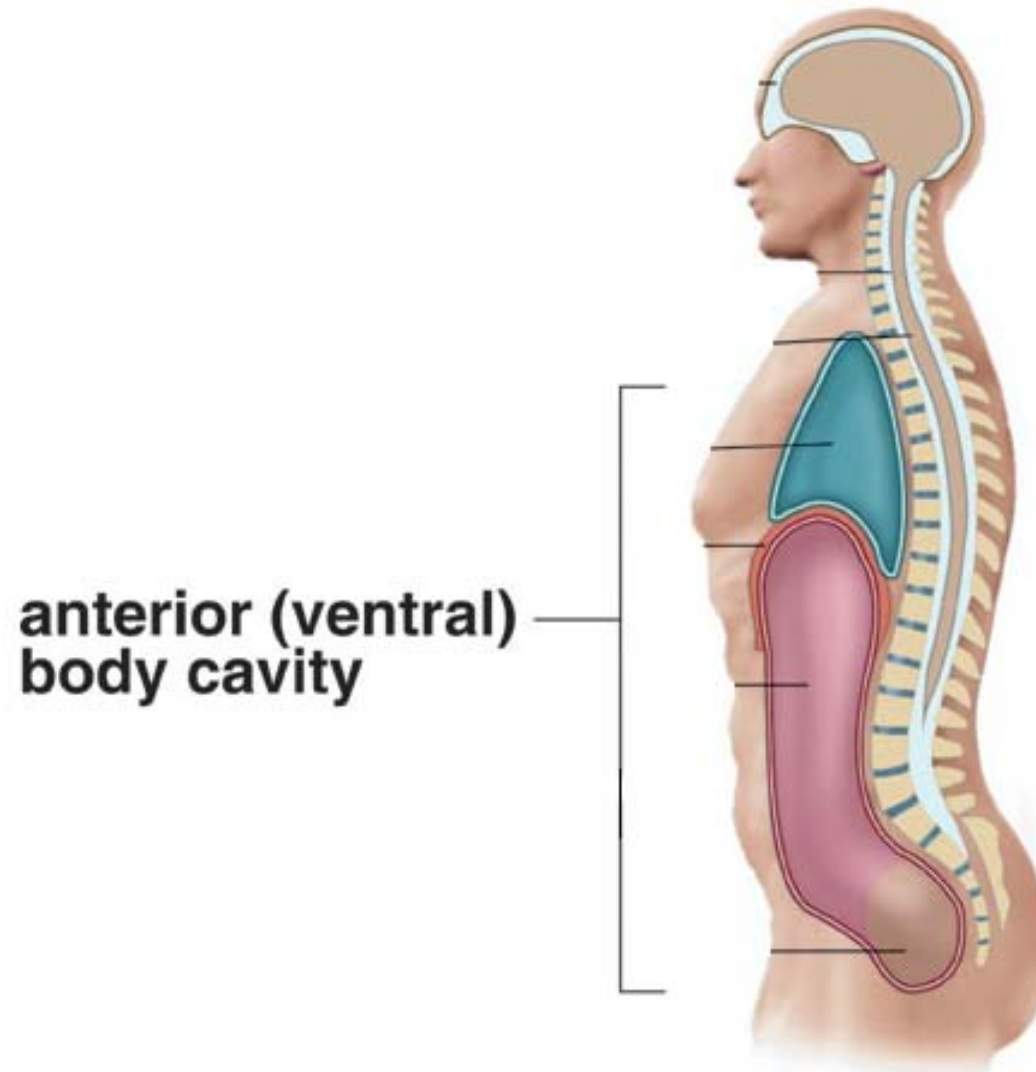
# 1.3- Body Cavities and Membranes

## Subdivisions of Dorsal Cavity



# 1.3- Body Cavities and Membranes

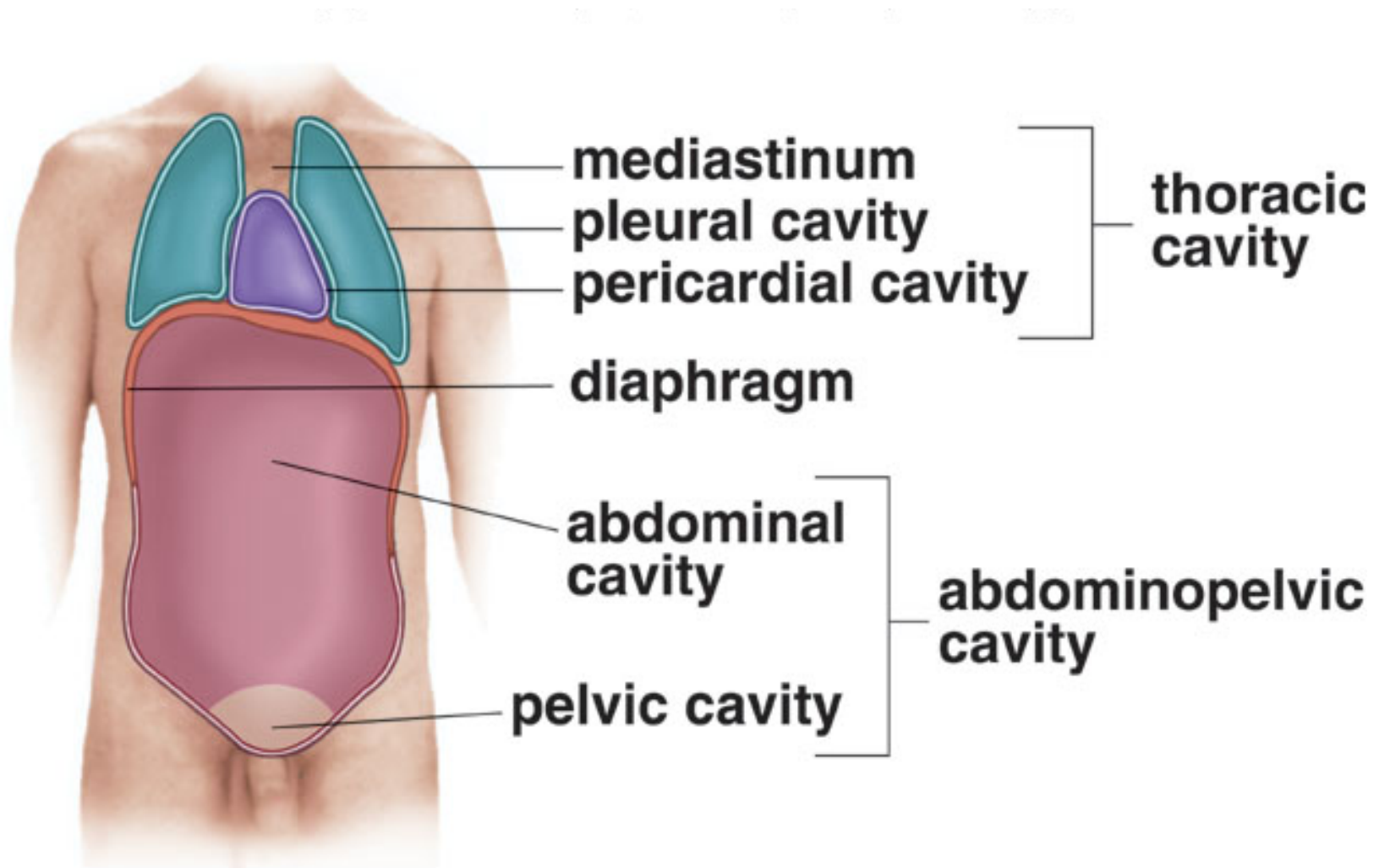
## Anterior (Ventral) Cavity





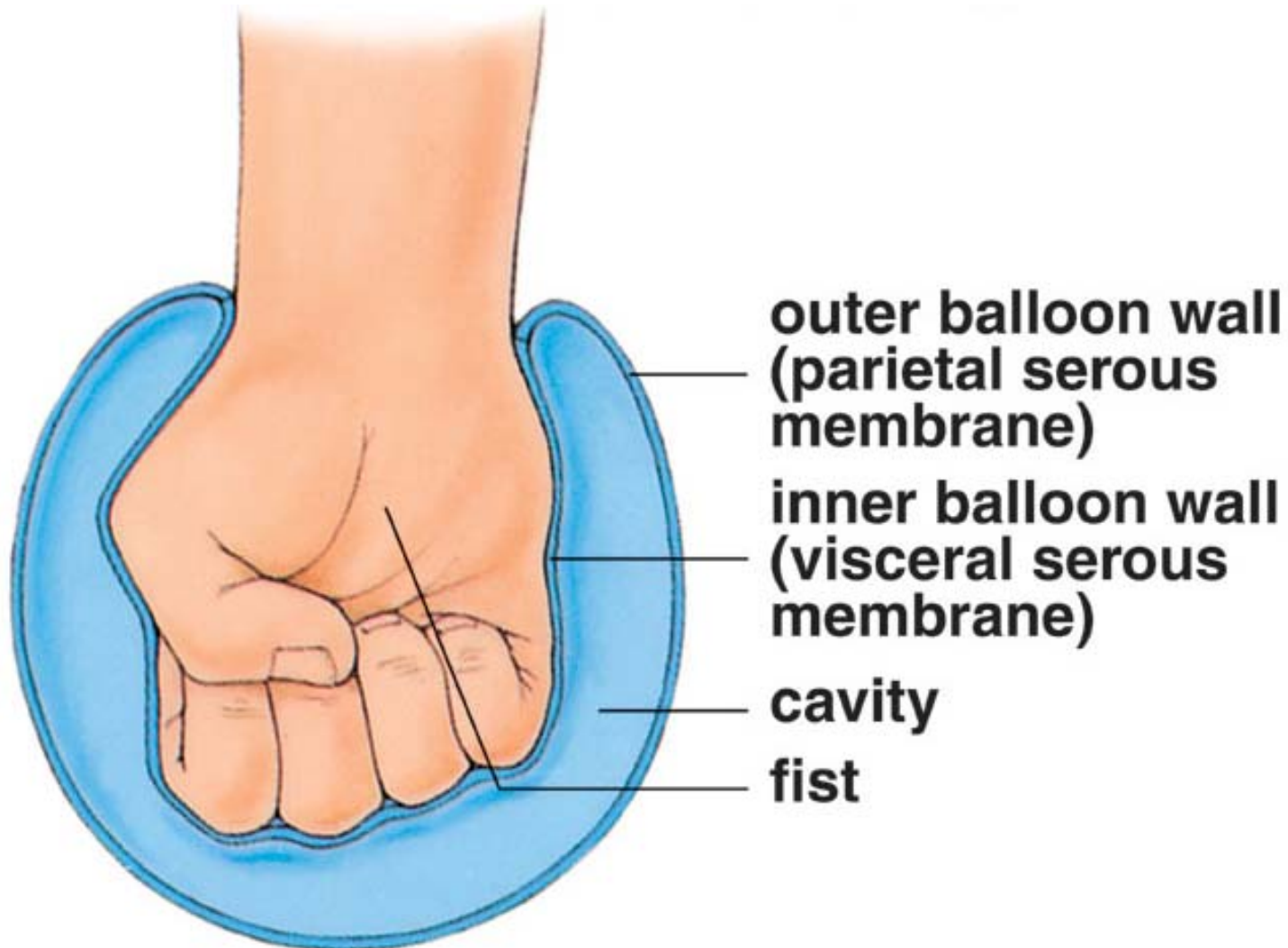
# 1.3- Body Cavities and Membranes

## Subdivisions of Ventral Cavity



# 1.3- Body Cavities and Membranes

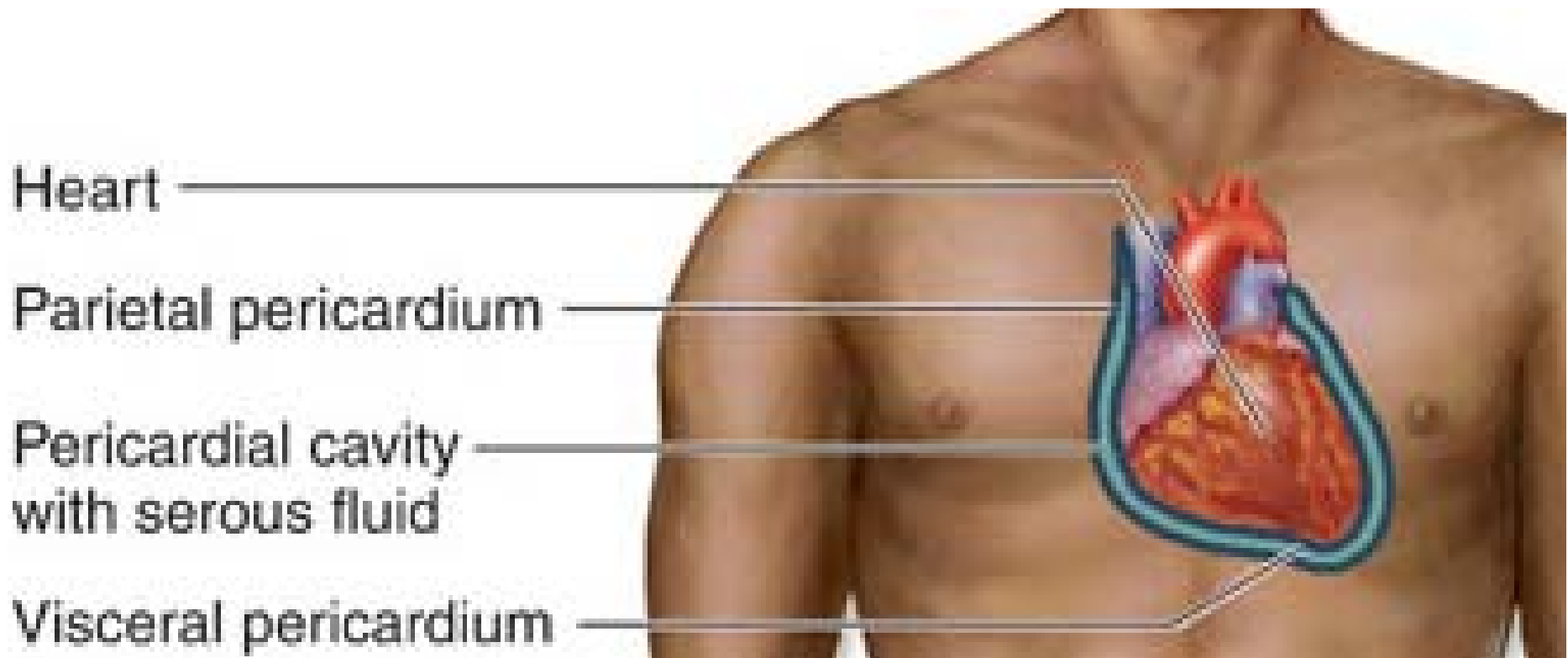
## Serous Membranes (3 Parts)



# 1.3- Body Cavities and Membranes

## Membranes

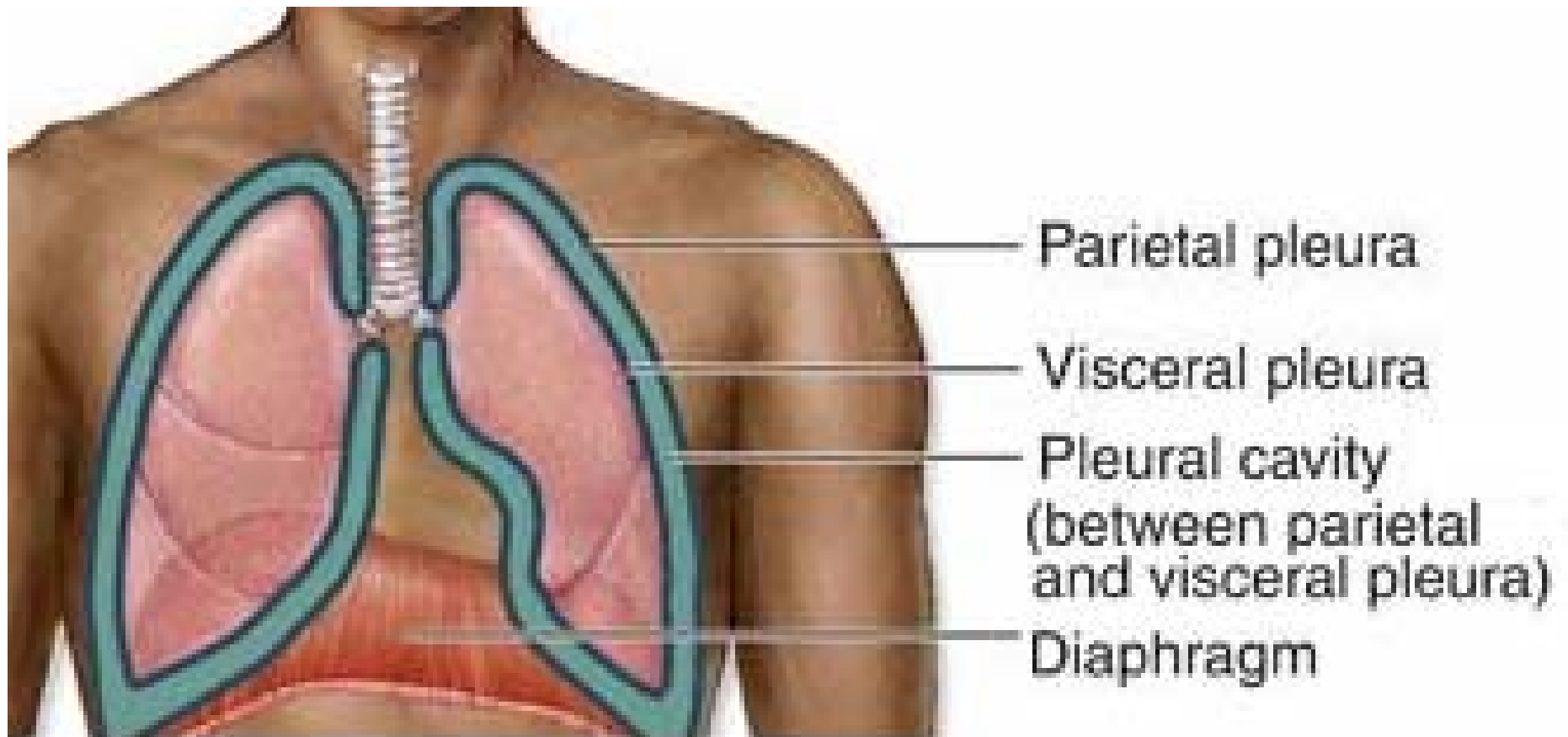
- Pericardium



# 1.3- Body Cavities and Membranes

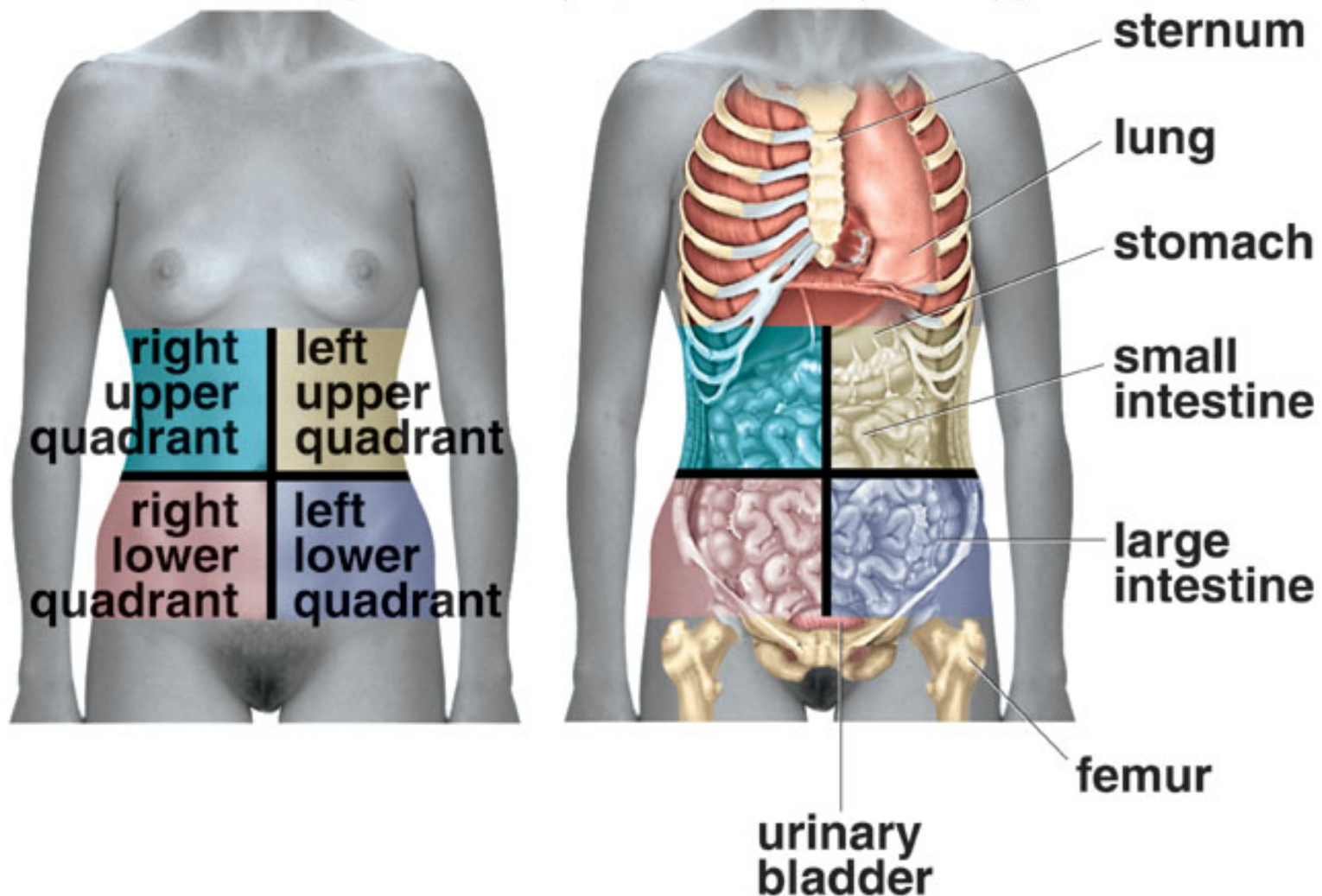
## Membranes

- Pleural Membrane



# 1.3- Body Cavities and Membranes

## Quadrants



# 1.4- Organ Systems

1. Support, Movement, and Protection
2. Integration and Coordination

3. Processing and Transporting
4. Reproduction



**Skeletal**



**Digestive**



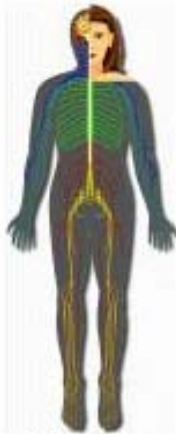
**Muscular**



**Lymphatic**



**Endocrine**



**Nervous**



**Cardiovascular**



**Male  
Reproductive**



**Female  
Reproductive**



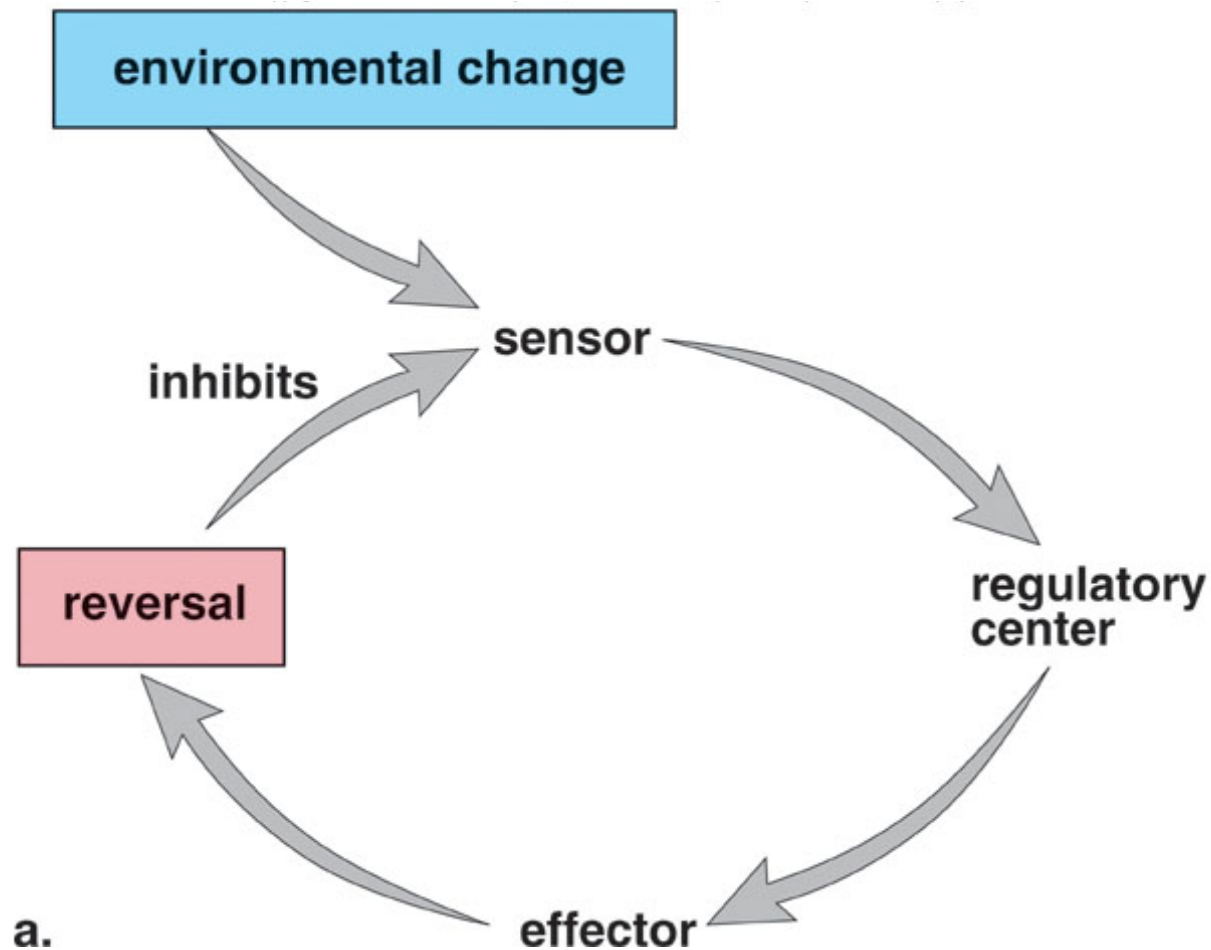
**Urinary**

# 1.5- Homeostasis

- Maintaining a relative constant internal environment
- Negative Feedback
- Positive Feedback

# 1.5- Homeostasis

Negative Feedback- a mechanism that opposes any deviation from the body's set value.





# 1.5- Homeostasis

Positive Feedback- a mechanism that increases the deviation from set value.

