

Axial and Appendicular Skeleton Honors Anatomy

Axial Skeleton

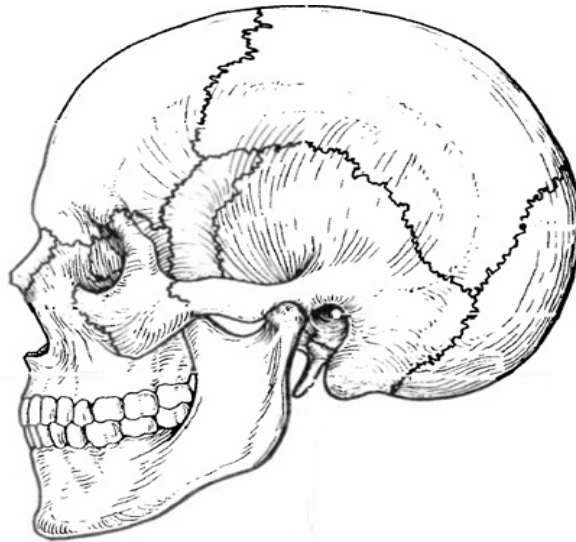
1. The _____ is divided into the skull, the vertebral column, and the thoracic cage.
2. On the diagram below, color orange the bones that are part of the axial skeleton.



Skull

1. List the 2 groups that the bones of the skull are divided into.

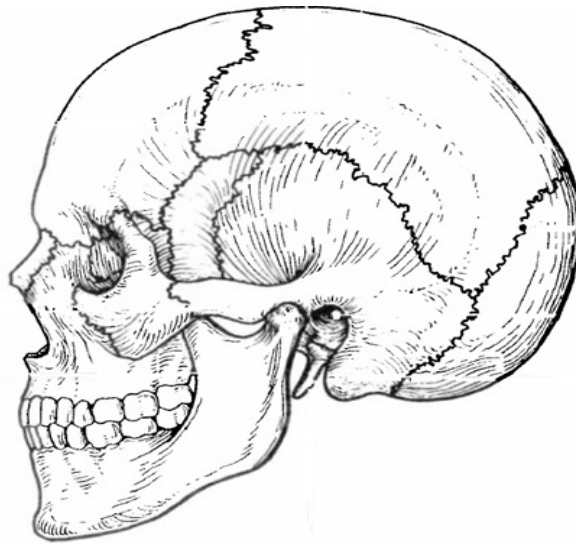
Using different colors and the list below, color and label the different bones and/or landmarks of the cranium.



- | | | |
|-------------------------------------|---|--------------------------------------|
| <input type="radio"/> Frontal bone | <input type="radio"/> Temporal bone | <input type="radio"/> Occipital bone |
| <input type="radio"/> Parietal bone | <input type="radio"/> External auditory meatus (landmark) | <input type="radio"/> Sphenoid bone |

2. What organ do the bones of the cranium (braincase) protect?
3. At the inferior base of the skull on the occipital bone is a large hole, where the spinal cord exits, called the _____ (landmark).

Using different colors and the list below, color and label the different bones and/or landmarks of the face.



Mandible
 Mandibular condyle
(landmark)

Maxilla
 Nasal bone

Zygoma
 Zygomatic arch
(landmark)

4. The facial bone that divides the nasal cavity into left and right halves and forms the nasal septum is called the _____.

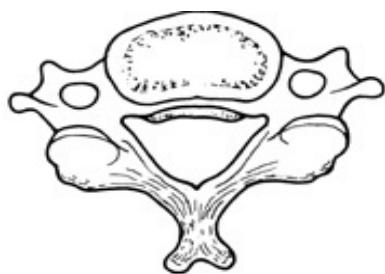
Vertebral Column and Vertebrae

For the diagram below of the vertebral column, follow the given instructions.



1. Color blue and label the first seven vertebrae, cervical vertebrae.
2. Color yellow and label the next twelve vertebrae, thoracic vertebrae.
3. Color green and label the next 5 vertebrae, lumbar vertebrae
4. Color orange and label the sacrum.
5. Color purple and label the coccyx.

Using different colors and the lists below, color and label the different superior view landmarks of the cervical vertebrae and the lateral view landmarks of cervical vertebrae.



Superior View

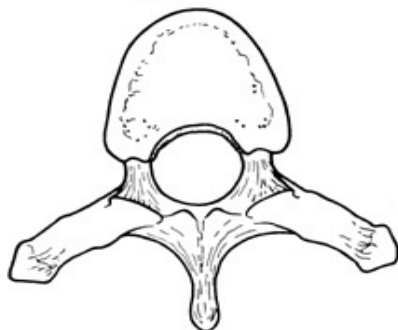


Lateral View

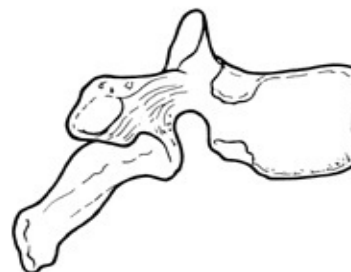
- Body
- Superior articular process
- Transverse foramen
- Transverse process
- Vertebral foramen
- Spinous process

- Body
- Inferior articular process
- Superior articular process
- Transverse process
- Spinous process

Using different colors and the lists below, color and label the different superior view landmarks of the thoracic vertebrae and the lateral view landmarks of thoracic vertebrae.



Superior View

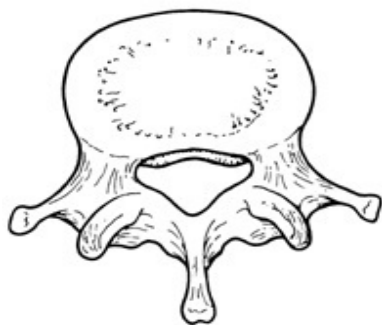


Lateral View

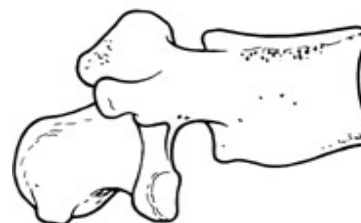
- Body
- Superior articular process
- Transverse process
- Vertebral foramen
- Spinous process

- Body
- Inferior articular process
- Superior articular process
- Transverse process
- Spinous process

Using different colors and the lists below, color and label the different superior view landmarks of the lumbar vertebrae and the lateral view landmarks of lumbar vertebrae.



Superior View

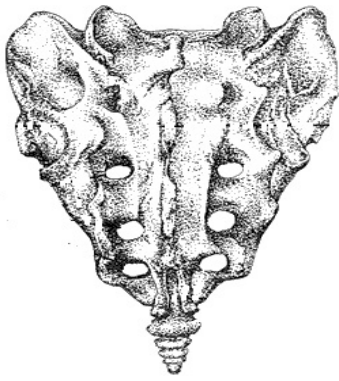


Lateral View

- Body
- Superior articular process
- Transverse process
- Vertebral foramen
- Spinous process

- Body
- Inferior articular process
- Superior articular process
- Transverse process
- Spinous process

Using different colors and the lists below, color and label the different posterior view landmarks of the sacrum and coccyx and the lateral view landmarks of the sacrum and coccyx.



Posterior View

- Coccyx (bone)
- Median sacral crest (landmark)
- Sacrum (bone)
- Superior articular process (landmark)



Lateral View

- Auricular surface (landmark)
- Coccyx (bone)
- Sacrum (bone)

Costals

1. List the 3 classifications of costals.

2. Costals are classified by how they attach to the _____.

Using different colors and the list below, color and label the different landmarks of a costal.



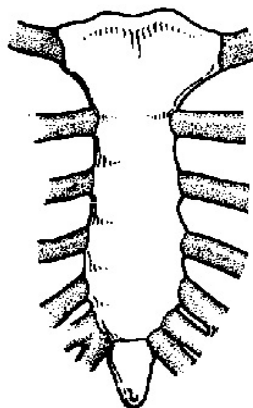
Inferior View

- Head
- Neck
- Shaft
- Sternal end
- Tubercle

Sternum

Using different colors and the list below, color and label the bones that make up the sternum.

- Body
- Manubrium
- Xiphoid process



Anterior View

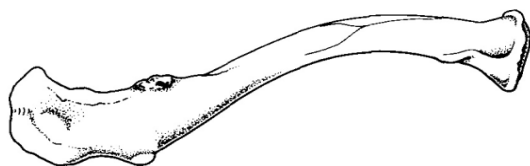
Upper Appendicular Skeleton

1. The _____ includes the bones: scapula, clavicle, humerus, radius, ulna, carpals, metacarpals, and phalanges.
2. On the diagram below, color green the bones that are part of the upper appendicular skeleton.



Clavicle

Using different colors and the lists below, color and label the different superior view landmarks of the clavicle and the inferior view landmarks of the clavicle.



Superior View

- Acromial end
- Sternal end

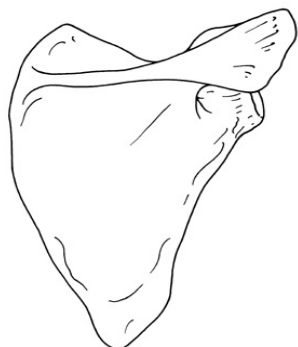


Inferior View

- Acromial end
- Articular facet for the acromion process
- Coracoid tuberosity
- Costal notch
- Sternal end

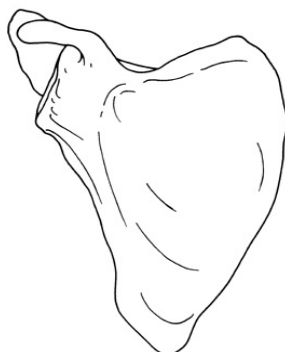
Scapula

Using different colors and the lists below, color and label the different anterior view landmarks, posterior view landmarks and the lateral view landmarks of the scapula.



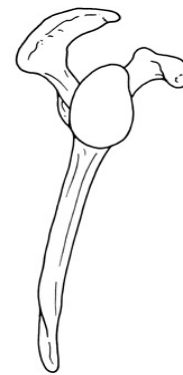
Posterior View

- Acromion process
- Glenoid fossa
- Lateral border
- Medial border
- Superior border



Anterior View

- Coracoid process
- Glenoid fossa
- Lateral border
- Medial border
- Superior border

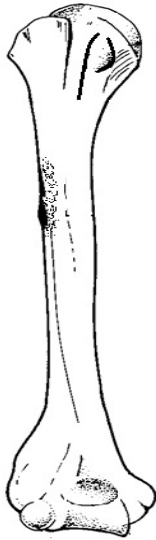


Lateral View

- Acromion process
- Coracoid process
- Glenoid fossa

Humerus

Using different colors and the lists below, color and label the different anterior view landmarks and posterior view landmarks of the humerus.



Anterior View



Posterior View

- Bicipital groove
- Capitulum
- Coronoid fossa
- Deltoid tuberosity
- Greater tubercle
- Head

- Lateral epicondyle
- Lesser tubercle
- Medial epicondyle
- Neck
- Surgical neck
- Trochlea

- Deltoid tuberosity
- Greater tubercle
- Head
- Lateral epicondyle

- Medial epicondyle
- Neck
- Olecranon fossa
- Trochlea

Radius and Ulna

Using different colors and the lists below, color and label the different anterior view landmarks and posterior view landmarks of the radius and ulna.



Anterior View



Posterior View

- Radius
- Head
 - Styloid process
 - Radial tuberosity
 - Carpal surface
 - Ulnar notch

- Ulna
- Trochlear notch
 - Olecranon process
 - Coronoid process
 - Radial notch
 - Head
 - Styloid process

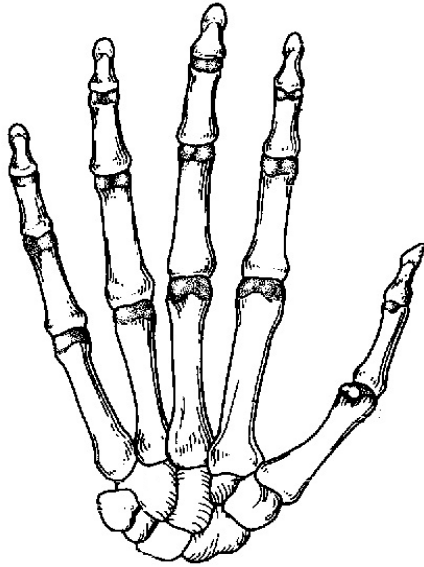
- Ulna
- Olecranon process
 - Radial notch
 - Head
 - Styloid process

- Radius
- Head
 - Styloid process
 - Carpal surface
 - Ulnar notch

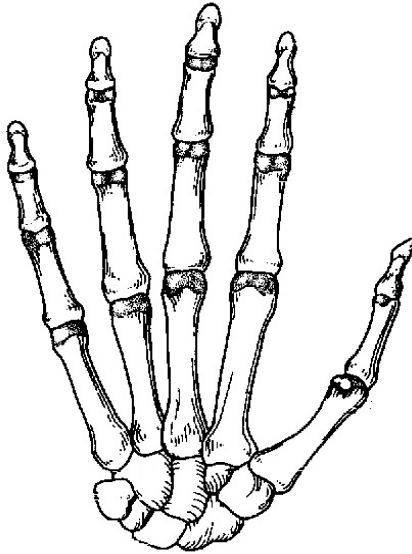
Hand

Using different colors and the list below, color and label the carpal bones of the anterior view of the hand.

- Trapezium (bone)
- Scaphoid (bone)
- Lunate (bone)
- Triangular (bone)
- Pisiform (bone)
- Hamate (bone)
- Capitate (bone)
- Trapezoid (bone)

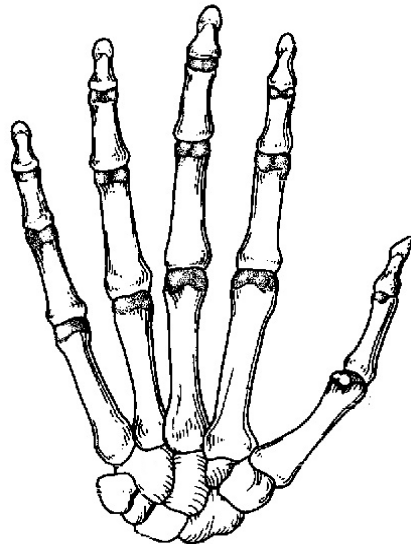


Color orange and label the metacarpal bones of the anterior view of the hand.



Using different colors and the list below, color and label the phalanges of the anterior view of the hand.

- Proximal phalanx (bone)
- Middle phalanx (bone)
- Distal phalanx (bone)



Lower Appendicular Skeleton

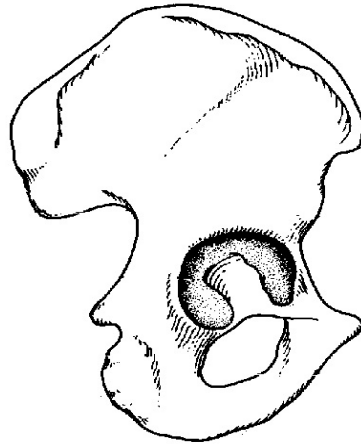
1. The _____ includes the bones: coxal, femur, patella, tibia, fibula, tarsals, metatarsals, and phalanges.
2. On the diagram below, color purple the bones that are part of the lower appendicular skeleton.



Coxal Bones

1. List the 3 bones that form the coxa.

Using different colors and the list below, color and label the three coxal bones and their common landmarks on the lateral and anterior views.



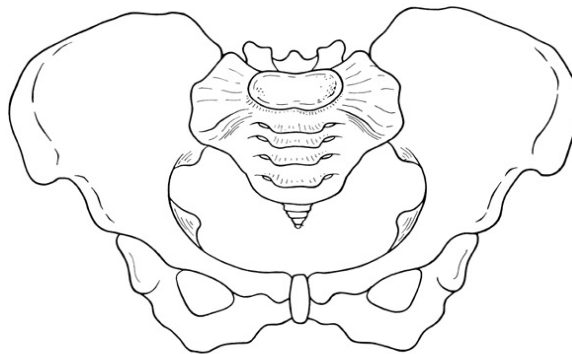
Lateral View

- Ilium
- Ischium

- Pubis
- Lunate articular surface (landmark)

- Acetabulum (landmark)
- Acetabular notch (landmark)

- Obturator foramen (landmark)



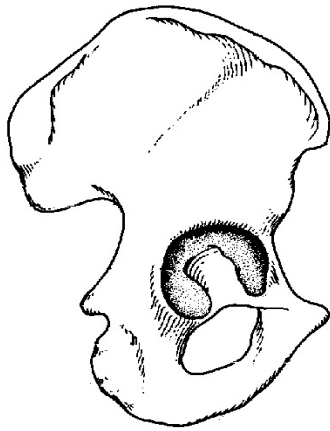
Anterior View

- Ilium
- Ischium

- Pubis (landmark)
- Acetabulum (landmark)

- Obturator foramen (landmark)

Using different colors and the list below, color and label the landmarks of the ilium on the lateral and medial views.



Lateral View

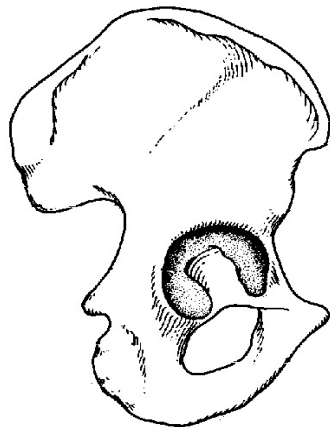
- Iliac crest
- Greater sciatic notch



Medial View

- Iliac crest
- Iliac fossa
- Greater sciatic notch
- Auricular surface

Using different colors and the list below, color and label the landmarks of the ischium on the lateral and medial views.



Lateral View

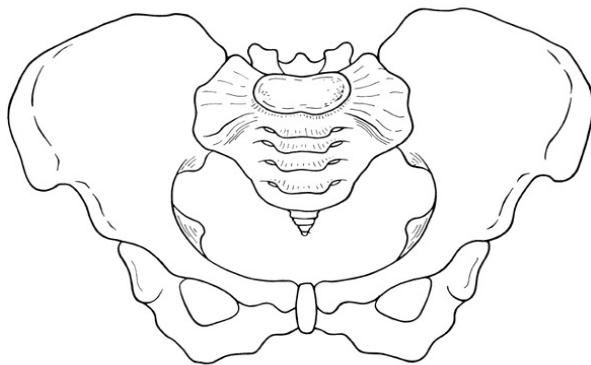
- Ischial ramus
- Ischial tuberosity



Medial View

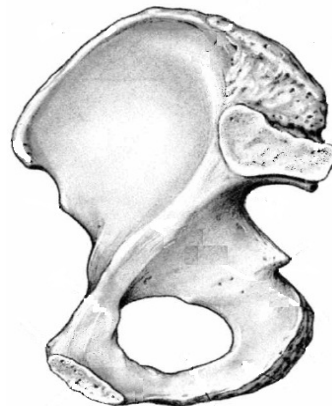
- Ischial ramus
- Ischial tuberosity

Using different colors and the list below, color and label the landmarks of the pubis on the lateral and medial views.



Anterior View

- Inferior pubic ramus
- Pubic symphysis
- Superior pubic ramus

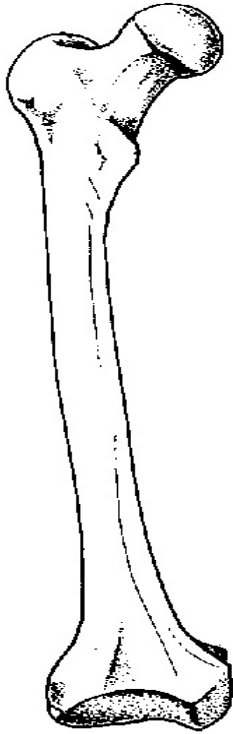


Medial View

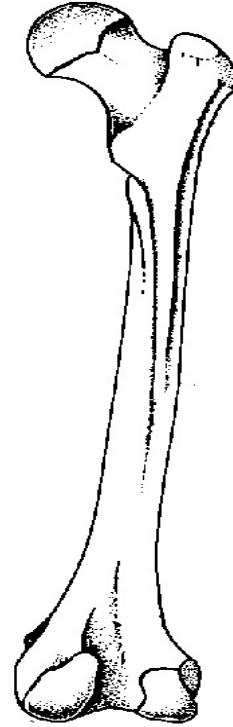
- Inferior pubic ramus
- Pubic symphysis
- Superior pubic ramus

Femur

Using different colors and the lists below, color and label the different anterior view landmarks and posterior view landmarks of the femur.



Anterior view



Posterior View

- | | |
|--|---|
| <input type="radio"/> Fovea capitis | <input type="radio"/> Lesser trochanter |
| <input type="radio"/> Greater trochanter | <input type="radio"/> Medial condyle |
| <input type="radio"/> Head | <input type="radio"/> Medial epicondyle |
| <input type="radio"/> Lateral condyle | <input type="radio"/> Neck |
| <input type="radio"/> Lateral epicondyle | <input type="radio"/> Patellar surface |

- | | |
|--|--|
| <input type="radio"/> Articular surfaces for the tibia | <input type="radio"/> Lateral epicondyle |
| <input type="radio"/> Gluteal tuberosity | <input type="radio"/> Lesser trochanter |
| <input type="radio"/> Greater trochanter | <input type="radio"/> Linea aspera |
| <input type="radio"/> Head | <input type="radio"/> Medial condyle |
| <input type="radio"/> Intertrochanteric line | <input type="radio"/> Medial epicondyle |
| <input type="radio"/> Lateral condyle | <input type="radio"/> Neck |

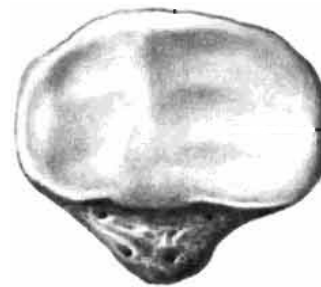
Patella

Using different colors and the lists below, color and label the different anterior view landmarks and posterior view landmarks of the patella.



Anterior view

- Apex
- Base

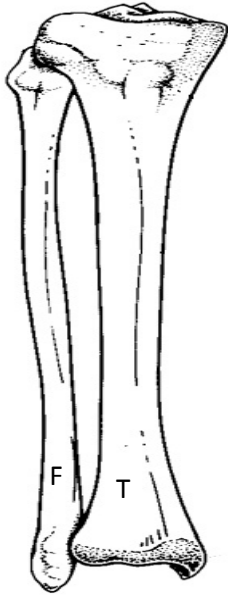


Posterior View

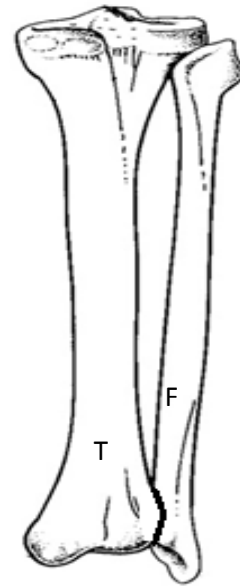
- Apex
- Base
- Articular surfaces for the femur

Tibia and Fibula

Using different colors and the lists below, color and label the different anterior view landmarks and posterior view landmarks of the tibia and fibula.



Anterior View



Posterior View

Tibia

- Anterior tibial crest
- Articular facet for the talus
- Fibular notch
- Intercondylar eminence
- Lateral condyle
- Medial condyle
- Medial malleolus
- Superior articular surfaces for the femur
- Tibial tuberosity

Fibula

- Articular facet for the talus
- Head
- Lateral malleolus

Tibia

- Articular facet for the head of the fibula
- Intercondylar eminence
- Lateral condyle
- Medial condyle
- Medial malleolus
- Superior articular surfaces for the femur

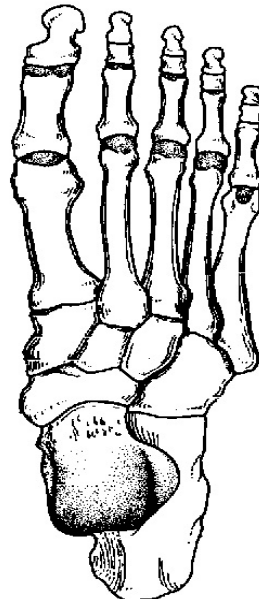
Fibula

- Articular facet for the tibia
- Head
- Lateral malleolus
- Malleolar fossa

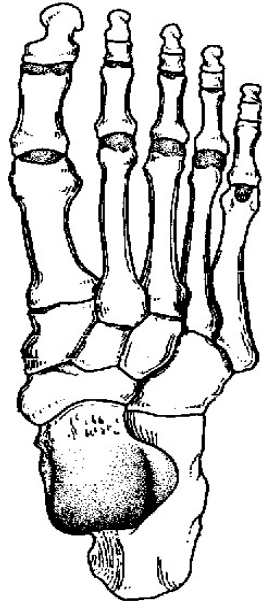
Foot

Using different colors and the list below, color and label the tarsal bones of the superior view of the foot.

- Calcaneus (bone)
- Talus (bone)
- Navicular (bone)
- Cuboid (bone)
- Medial cuneiform (bone)
- Intermediate cuneiform (bone)
- Lateral cuneiform (bone)



Color orange and label the metatarsal bones of the superior view of the foot.



Using different colors and the list below, color and label the phalanges of the superior view of the foot.

- Proximal phalanx (bone)
- Middle phalanx (bone)
- Distal phalanx (bone)

