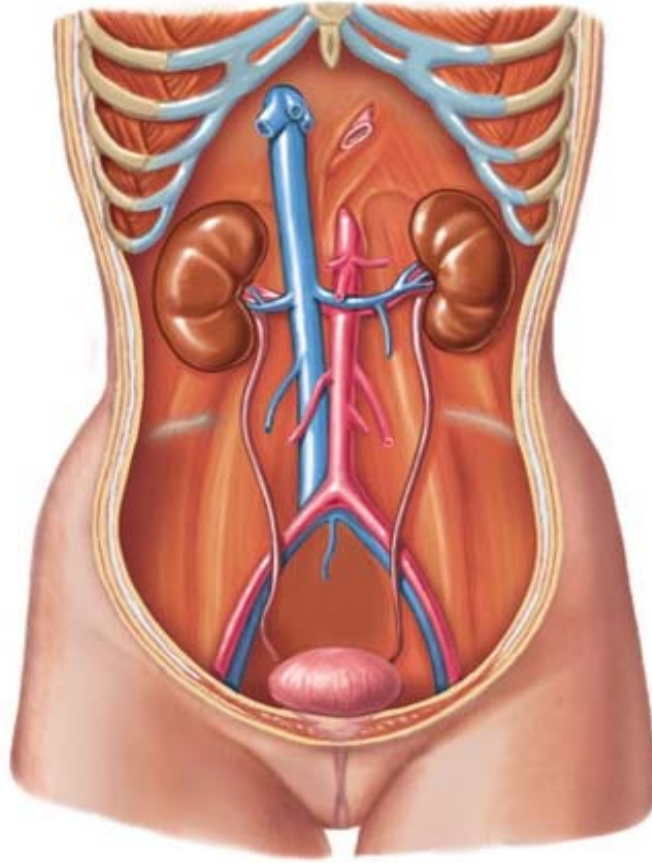


Anatomy of the Urinary System and Kidney Honors Anatomy

Using the list below, label the different organs and vessels of the urinary system



Kidney
Renal artery

Renal vein
Ureter

Urethra
Urinary bladder

- Using the list above, create a flow map illustrating the pathway of urine through the urinary system. (You will not be using renal artery or renal vein.)

- 6 Functions of the Urinary System.

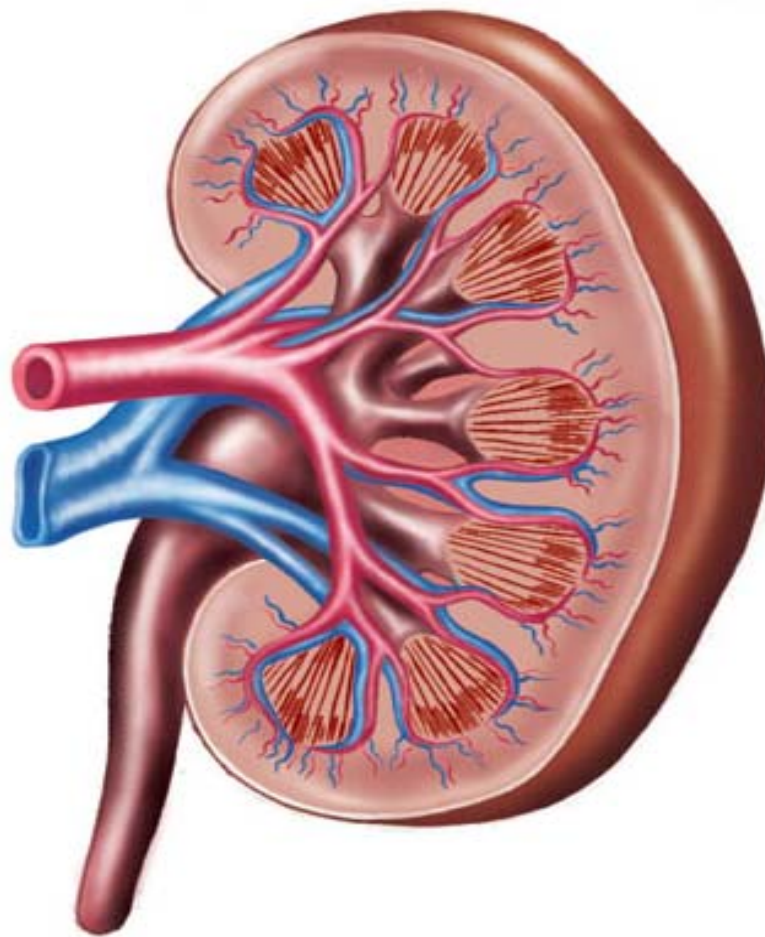
- _____ - removal of waste products.
- Regulation of _____.
- Regulation of the _____.
- Regulation of _____.
- Regulation of _____.
- Synthesis of _____.

Complete the paragraph about excretion by the urinary system.

The primary organs of the urinary system are the 1 , whose function is to produce 2 . From the kidney, urine is transported through the 3 to the 4 where it is stored. The 5 reflex is activated when the urinary bladder walls are stretched. 6 within the walls of the urinary bladder are stimulated and send 7 from the bladder to the spinal cord through the 8 . Integration of the reflex occurs in the spinal cord, and action potentials from the spinal cord are sent back to the urinary bladder via 9 . These action potentials cause the urinary bladder to 10 . As the urinary bladder contracts, the 11 relaxes allowing urine to flow into the 12 before being expelled externally from the body. The process of excreting urine from the body is known as 13 or urination.

1. _____
2. _____
3. _____
4. _____
5. _____
6. _____
7. _____
8. _____
9. _____
10. _____
11. _____
12. _____
13. _____

Using the list below, label the different parts of the kidney.



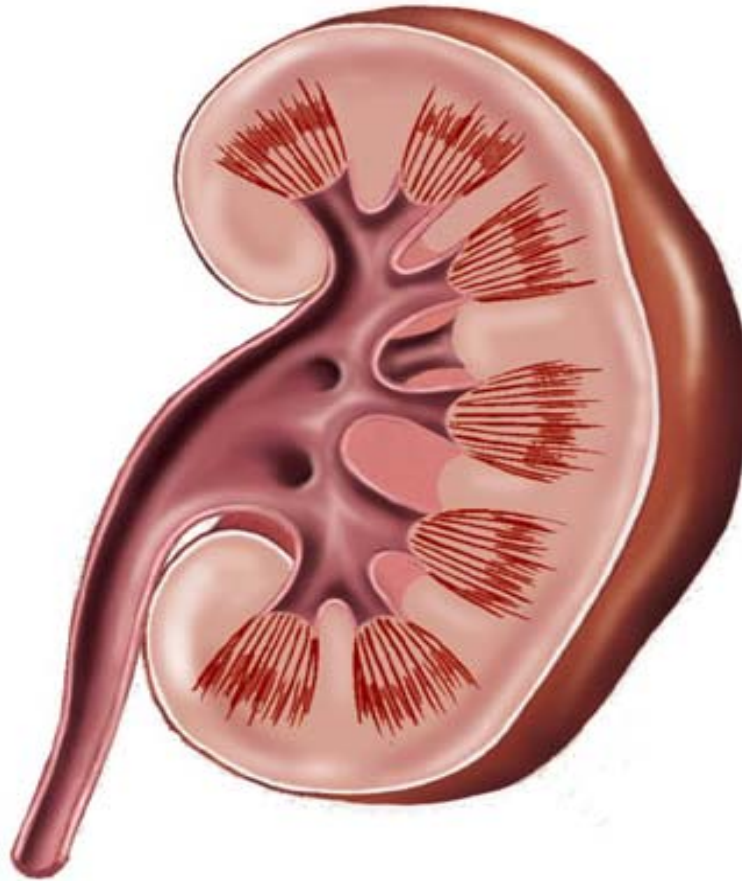
Hilum
Renal capsule

Renal cortex
Renal medulla

Renal artery
Renal vein

Ureter

Using different colors and the list below, color and label the different internal parts of the kidney.



Major calyx
Minor calyx

Renal papilla
Renal pelvis

Renal pyramids
Renal columns

Ureter

1. Using the list above, create a flow map illustrating the pathway of urine through the kidney.
(You will not be using renal columns)